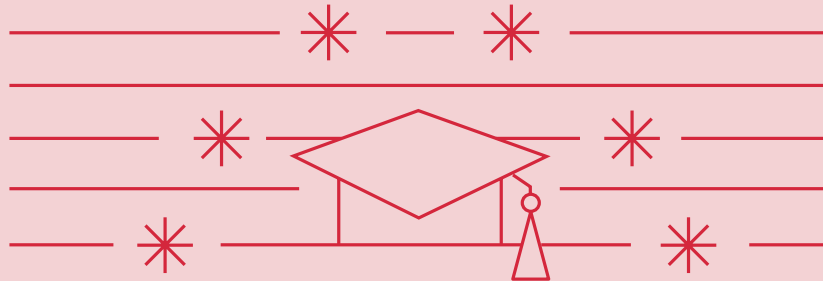


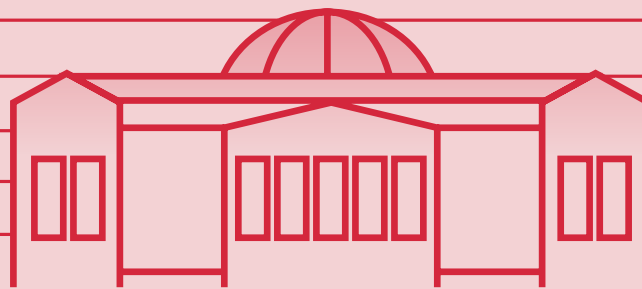
2022
Spring Semester



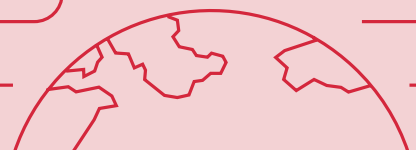
KNU

Admission Guide

for Undergraduate International Students



We make the Future



KNU KYUNGPOOK
NATIONAL UNIVERSITY

Content

I. ABOUT KYUNGPOOK NATIONAL UNIVERSITY

1. History	03
2. Numbers	03
3. KNU Honors	04
4. Programs for International Students	05

II. ADMISSION GUIDE

1. Admission Process	06
2. Schedule	06
3. Number of Admissions and Academic Departments	07
4. Eligibility	09
5. Application Procedure	11
6. Required Documents	12
7. Application Fee	14
8. Important Notes for Applicants	14
9. Scholarships and Benefits	15
10. Tuition Fees	16
11. Dormitory Fees	16
12. Contact Us	16

III. APPENDICES

[Appendix 1] Apostille	17
[Appendix 2] Homepage Addresses of Academic Departments	18
[Appendix 3] Location of Department Offices and Telephone no.	20

History

Numbers

I. ABOUT KYUNGPOOK NATIONAL UNIVERSITY

1946

Colleges of Education, Medicine and Agriculture in Daegu are upgraded to National Colleges

1951

Colleges of Education, Medicine and Agriculture, Liberal Arts and Sciences, Law and Political Sciences combine to create Kyungpook National University

1953

First graduate school established

2021

Kyungpook National University is now comprised of 17 colleges and 2 schools, 94 Majors, 12 graduate schools, 128 Research Centers

Main Campus



Sang-ju Campus



Medical Town



Medical Campus



Students in total
36,295



International students
1,744



Graduate students
6,720



Undergraduate students
29,575



Full-time faculty members
1,200



Graduates cumulative
249,433



Administrative staff members
1,166

KNU Honors

Credits

- Awarded IEQAS (International Education Quality Assurance System) accreditation for 8 consecutive years by the Korean Ministry of Education.
- **1st among national universities in Korea**

QS World
University Rankings
2021

THE World
University Rankings
2021

US News &
World Report
'Best Global Universities'

THE World University
Impact Rankings
(54th in the world)

Leiden Ranking 2020
Number of top 1%
publication

World University Rankings
from Shanghai Jiao Tong
University, Institute of Higher
Education Evaluation

The largest number of
2020 GKS recipients
(24 students from 19
different countries)

Center for World
University Rankings
2020

Student-Centered University

- 74.5 billion won worth of scholarships have been provided to KNU students, 35,046 total beneficiaries and a 64.5% benefit rate
- KNU offers opportunities to study in the best universities in the world. (University of California, Berkeley, Oxford University, Yale University)
- KNUPIA mobile application for KNU students
 - KNUPIA provides Mobile Student ID feature
 - KNUPIA provides access to campus facilities with a QR code feature
 - Announcement can be made via push notifications and banners
- KNU is the only national university that has a hospital-level health care center
- KNU students can get up to two medical check-ups for free

Lots of Talented Students

- Maintained employment rate of graduates ranked 1st among national universities in Korea
- High number of employments among graduates
 - 1,278 employed by large companies, 680 employed by public institutions over the past 2 years

Best Teaching Ability

- Performance of SCI-level thesis per professor ranked 1st among national universities in Korea.
- The number of research papers in International Journals ranked 1st among national universities in Korea
- 2 professors in KNU were named on the world's most influential researchers list (HCR).
- 4 professors in KNU published papers in the Journal of Nature, Science.

Investments from the Government

- Amount of financial support from the government: most among national universities in Korea (318,116 million won)
- Win orders for R&D projects (20 projects, 231,760 million won)
- The highest level of Governmental Funding

Special Programs for International Students



Cultural Experience Program

Provides cultural experience programs that can enhance understanding of Korea and improve adaptability to life in Korea.
(ex, Daegu City Tour, Cultural Trip, International Day, K-pop Dance Festival, etc.)

Tutor Program

I:I matching system between a senior student in your department and an international student, to help international students overcome difficulties they may experience in their studies.

Assistance in Employment

To support international students, KNU offers various special lectures such as employment training programs, internship programs and employment information.

Orientation for New International Students

KNU holds an orientation for new incoming students to help them quickly adapt to life in Korea. Through the orientation, international students gain valuable information such as course registration, visa, insurance and student ID card acquisition.

Graduation Ceremony

KNU holds a graduation ceremony for international students who graduate from KNU every semester to celebrate the students' achievements.

International Programs

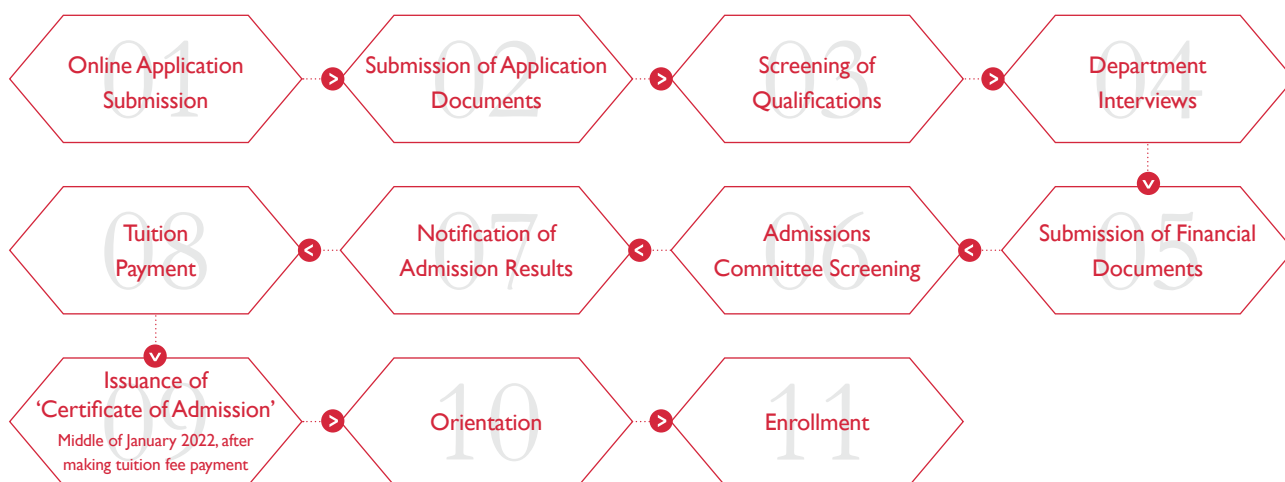
KNU offers a variety of international programs for international students such as an exchange program and summer school program, and provides many opportunities to study abroad.

I:I Counseling for International Students

International students can receive counseling from their department office and the Office of International Affairs about difficulties in their studies and personal life.

II. ADMISSION GUIDE

I. Admission Process



2. Schedule

Procedures		Time	Remarks
Online Application Open		Oct. 18 (Mon), 09:00 – Nov. 5 (Fri), 2021, 18:00	Refer to KNU website (http://en.knu.ac.kr)
Submission of Application Documents		Oct. 18 (Mon), 09:00 – Nov. 11 (Thu), 2021, 18:00	To the Office of International Affairs (첨성인미래관 2nd Fl.), 6 Required documents ①~⑫
Screening of Qualifications for Application		Nov. 12 (Fri) - Nov. 23 (Tue), 2021	Applicants will be individually notified of screening results
Department Interviews	1st Preference Department	Nov. 24 (Wed) - Dec. 2 (Thu), 2021	Departments will provide notice (with an interview schedule if available)
	2nd Preference Department	By Dec. 13 (Mon), 2021	Only for applicants who are not selected in the department interview for their first preference
Submission of Financial Documents		By Dec. 24 (Fri), 2021	Only for applicants who pass the department interview
TOPIK Certificate Submission		· 78th : By Nov. 26 (Fri), 18:00pm · 79th : By Dec. 24 (Fri), 18:00pm	Only for applicants who submit a test identification slip
Admissions Committee Screening		By Dec. 29 (Wed), 2021	
Notification of Admission Results		Jan. 5 (Wed), 2022	At http://gp.knu.ac.kr (Korean) and by email
Payment of tuition fees (Registration)		Middle of January 2022	The exact schedule will be announced later
		From the middle of January, 2022	
Issuance of ‘Certificate of Admission’		· Overseas Residents: International Post with address written on application after paying the tuition fee and submitting the Verification documents · Applicants residing in Korea: Pick up by visiting the Office of International Affairs at Kyungpook National University after paying the tuition fee and submitting the Verification documents	
Submission of Verification Documents		By the middle of January, 2022	The exact schedule will be announced later

3. Number of Admissions and Academic Departments

1. Number of Admissions

International student admissions are based on a departmental limit.

※ The following departments will select a limited number of students per semester.

- Department of Economics & Trade: around 5 people
- Department of Korean Language and Literature Education: 3 people
- Department of History Education: 1 person

2. Academic Departments

A. Daegu Campus

College	Freshman		Transfer (2nd preference not available)	
Humanities	Korean Language & Literature	English Language & Literature	Korean Language & Literature	English Language & Literature
	History	Philosophy	History	Philosophy
	French Language & Literature	German Language & Literature	French Language & Literature	German Language & Literature
	Chinese Language & Literature	Archaeology & Anthropology	Chinese Language & Literature	Archaeology & Anthropology
	Japanese Language & Literature	Korean Literature in Chinese Characters	Japanese Language & Literature	Korean Literature in Chinese Characters
	Russian Language & Literature		Russian Language & Literature	
Social Sciences	[Political Science & Diplomacy]	Sociology	Political Science & Diplomacy	Sociology
	[Geography]	Library & Information Science	Geography	Library & Information Science
	Psychology	Social Welfare	Psychology	Social Welfare
	Media and Communication		Media and Communication	
Natural Sciences	[Mathematics]	[Physics]	Mathematics	Physics
	[Chemistry]	[Life Sciences (Life Sciences and Biotechnology)]	Life Sciences (Biology)	Life Sciences (Life Sciences and Biotechnology)
	[Earth System Science]	Life Sciences (Biology)	Chemistry	Statistics
	[Statistics]		Earth System Science (Geology)	Earth System Science (Astronomy and Atmospheric)
			Earth System Science (Oceanography)	
Economics & Business Administration	Business Administration	Economics & Trade	Business Administration	Economics & Trade
Engineering	Materials Science & Engineering	Mechanical Engineering	Materials Science & Engineering (Materials Science and Metallurgical Engineering)	Materials Science & Engineering (Electronic Materials Science and Engineering)
	Architecture (Architecture)	Architecture (Architectural Engineering)	Mechanical Engineering	Civil Engineering
	Civil Engineering	Applied Chemistry	Architecture (Architectural Engineering)	Architecture (Architecture)
	Chemical Engineering	[Polymer Science and Engineering]	Applied Chemical Engineering (Applied Chemistry)	Applied Chemical Engineering (Chemical Engineering)
	Textile System Engineering	Environmental Engineering	Polymer Science and Engineering	Textile System Engineering
	Energy Engineering		Environmental Engineering	Energy Engineering
IT Engineering	Electronics Engineering	Electrical Engineering	Electronics Engineering	Electrical Engineering
	Computer Science and Engineering	Computer Science and Engineering (Global software Convergence)	Computer Science and Engineering	Computer Science and Engineering (Global software Convergence)
Agriculture & Life Sciences	[Applied Biosciences]	[Food Science & Biotechnology]	Applied Biosciences	Food Science & Biotechnology

College	Freshman		Transfer (2nd preference not available)	
Agriculture & Life Sciences	[Forest Sciences and Landscape]	[Horticultural Sciences]	Forest Sciences and Landscape (Wood & Paper Science)	Forest Sciences and Landscape (Forestry)
	[Agricultural Civil & Bio-Industrial Engineering]	[Bio-fibers and Materials Science]	Forest Sciences and Landscape (Landscape Architecture)	Horticultural Science
	[Food and Resource Economics]		Agricultural Civil & Bio-Industrial Engineering (Bio-Industrial Machinery Engineering)	Agricultural Civil & Bio-Industrial Engineering (Agricultural Civil Engineering)
			Bio-fibers and Materials Science	Food and Resource Economics
Music & Arts	Music	[Korean Traditional Music]	Music	Korean Traditional Music
	Fine Arts	Design	Fine Arts	
Teachers College	Korean Language and Literature Education	History Education	N/A	
Human Ecology	Child Studies	Clothing and Textiles	Child Studies (Child and Family Studies)	Child Studies (Child Studies)
	Food Science and Nutrition		Clothing and Textiles	Food Science and Nutrition
Public Administration	[Public Administration]		Public Administration	

B. Sangju Campus : Located in Sangju city

College	Freshman		Transfer (2nd preference not available)	
Ecology & Environmental Science	[Ecology & Environmental System]	[Entomology]	Ecology & Environmental System (Plant Resources and Environment)	Ecology & Environmental System (Forest Environment and Resources)
	[Leisure & Sports]	[Tourism]	Ecological Environment & Ecotourism (Applied Biology)	Ecological Environment & Ecotourism (Ecotourism)
	[Animal Science]	[Animal Biotechnology]	Horse/Companion and wild Animal Science	Leisure & Sports
	[Horse/Companion and wild Animal Science]		Animal Science	Animal Biotechnology
Science & Technology	[Disaster Prevention and Environmental Engineering]	[Precision Mechanical Engineering]	Disaster Prevention and Environmental Engineering (Constructional and Disaster Prevention Engineering)	Disaster Prevention and Environmental Engineering (Civil Environmental Engineering)
	[Automotive Engineering]	[Software]	Precision Mechanical Engineering	Automotive Engineering (Environment Friendly Vehicle Engineering)
	[Food and Food-service Industry]	[Nano & Materials Science and Engineering]	Automotive Engineering (Intelligent Vehicle Engineering)	Software
	[Convergence & Fusion System Engineering]	[Textile Engineering & Fashion Design (Textile Engineering)]	Food and Food-service Industry	Nano & Materials Science and Engineering (Energy Chemical Engineering)
		[Textile Engineering & Fashion Design (Fashion Design)]	Nano & Materials Science and Engineering (Advanced Materials Science & Engineering)	Convergence & Fusion System Engineering (Aeronautical satellite system Engineering)
			Convergence & Fusion System Engineering (Plant system Engineering)	Textile Engineering & Fashion Design (Fashion Design)
			Textile Engineering & Fashion Design (Textile Engineering)	

※ Note

- ① Most courses in the Undergraduate program are conducted in Korean, but some classes are taught in English. (Please check with the department office whether English classes are available.)
- ② Applicants who apply for the undergraduate freshman program can select two departments for a first preference and second

preference, and students in the departments **marked in bold** can apply for a second preference only. (The second preference for those who apply for the undergraduate transfer program is not available.)

- ③ School of Architecture (Major in Architecture) is a 5-year program.
- ④ Students who are enrolled in the Department of Civil Engineering, Electrical Engineering, and Agricultural Civil & Bio-industrial Engineering must complete the ABEEK (Accreditation Board for Engineering Education of Korea) program. Transfer students may take one or two semesters longer depending on their ABEEK requirements.
- ⑤ Applicants for the Department of French Language & Literature and Media and Communication must attend an in-person interview with a department representative in Korea.
- ⑥ The Departments of Music, Design and Fine Arts accept new students in the spring semester only.
- ⑦ According to the Regulations for Student Enrollment at the College of Education, the acceptance rate of international students cannot exceed 10% of the admission quota, and transfer applicants will not be eligible to apply (freshman only).
- ⑧ Applicants for the Department of Music must complete a Performance Test.

Major	Test Piece	Time
Singing	1. One Italian song (free song) 2. One German song (free song)	
Piano	1. One musical composition at F. Chopin Etude Op.10, Op.25 2. One of the quickest movements of L. v. Beethoven Sonata (without repeating)	
Composition	1. Composition: Writing a three-part piano song	180 minutes
	2. Piano: One free song	
Orchestra	One fast movement at Concerto or one free song	

- ※ Note: 1. Performance must be played without looking at the score.
 2. Applicants must be accompanied by a pianist.
 3. Applicants must bring instruments except for piano.
 4. Contact the Department of Music at + 82-53-950-5656 for more details.

4. Eligibility

Nationality Requirement for both freshmen and transfer students

- Applicants and both of his/her parents must be non-Korean nationals.
- * Nationality criterion is evidenced only if applicants and both of his/her parents acquire non-Korean nationals on the period before the applicant begins the curriculum corresponding to educational program of Korean high school.
- Multi-nationals with Korean citizenship are not eligible.
- Eligible Nationality Status must be established before the due date of application.

I. Freshmen Admissions

► Applicants must meet all of the following requirements:

- ① He or she must have completed his or her entire elementary and junior high school education and;
- ② He or she must have completed (or is expected to complete) high school education at a comparable and equivalent level to that which is provided in Korea.

※ NOTE

- Applicants who have completed home schooling, cyber learning and qualification examination in Korea or abroad during 12 years of education are not eligible for enrollment.

Formal education equivalent to Korea high school

※ Enforcement decree in the Law of Elementary & Middle School Education No. 98-1-9

Years of Education		1	2	3	4	5	6	7	8	9	10	11	12	13	14	15	16
Korean system		Elementary school						Middle school			High school			University			
Foreign system	12	5 - 3 - 4 - 4		5 years				3 years			4 years			4 years			
	13	6 - 4 - 3 - 3		6 years				4 years				3 years			3 years		
	11	6 - 3 - 2 - 5		6 years				3 years			2 years		5 years				
	13	2 - 4 - 3 - 4 - 3		2 years		4 years			3 years			4 years			3 years		
	12	8 - 4 - 4		8 years								4 years			4 years		

- Applicants should complete all formal education in ONE country.
- Applicant who studied in more than two countries should complete 12 years of education.
 - Applicant who have completed less than 11 years should apply for high school as a freshman or transfer in Korea or overseas.
 - In the case of 11 years (above), foreign system applicants should complete the last 3 years of education in ONE country to acquire qualification for high school
 - For students with unfinished years due to a gap in the education system, the period of years at an overseas university will be counted as equivalent to Korean high school years.

Criteria for Qualification of High School Graduation

- By the day before the opening day of admission to KNU
However, for applicants from countries which the academic year and the opening day of school are later than 1 month difference from Korea (ex, Japan). 1 month of the period of attendance at an overseas high school will be approved as equivalent to graduation.

2. Transfer Admissions (third grade)

▶ Applicants must meet either of the following requirements

- ① Graduated or about to graduate from a 4-year university, or;
- ② Graduated or about to graduate from a 2 or 3-year accredited college or completed at least two years (4 semesters) of a 4-year university program (completed over 70 credit hours)

※ NOTE

- Those who have completed two years at a 3-year university are not eligible.
- Those who graduated from a university that does not have a credit system are not eligible.
- Those who are enrolled at KNU can't apply for transfer admission.
- Applicants who have completed home schooling, cyber learning and qualification examination in Korea or abroad during whole education period are not eligible for enrollment.

3. Eligibility for Language Proficiency

A. Applicants who want to apply for the following **14 departments** must submit a Korean language score report **by Nov. 11 (Thu), 2021.**

※ But, those who take the 78th [Oct. 17th (Sun)] and 79th [Nov. 14th (Sun)] "TOPIK" exam can apply with a test identification slip and must submit a TOPIK certificate for level [3 or 4] or higher by Dec. 24th, 18:00pm, 2021.

Department	Eligibility for Language Proficiency
<ul style="list-style-type: none"> • Media and Communication • Economics and Trade • Geography • Sociology • Fine Arts 	Level 3 "TOPIK" certificate or higher

Department	Eligibility for Language Proficiency
<ul style="list-style-type: none"> • Korean Language and Literature • English Language and Literature • French Language and Literature • German Language & Literature • Philosophy • Social Welfare • Korean Language & Literature Education 	Level 4 "TOPIK" certificate or higher
<ul style="list-style-type: none"> • Business Administration 	Level 4 "TOPIK" certificate or a level 6 certificate of completion from Kyungpook National University's Korean Language Institute
<ul style="list-style-type: none"> • Public Administration 	Level 3 "TOPIK" certificate or higher or a level 4 or higher certificate from a Korean Language Institute in Korea

B. Except for the above 14 departments, applicants should provide one of the following as proof of language proficiency

- ① Korean proficiency: A "TOPIK" certificate for level 3 or higher
 - ✗ Applicants who take the 78th [Oct. 17th (Sun)] and 79th [Nov. 14th (Sun)] "TOPIK" exam can apply with a test identification slip and must submit a certificate for level 3 or higher by Dec. 24st, 18:00pm, 2021.
- ② Korean proficiency: Certificate of completion for level 3 or higher at a Korean Language Institute of a university.
 - ✗ Only accepted if completion date is before Nov. 11th, 2021.
- ③ Applicants who can speak Korean but don't have a certificate of Korean language proficiency can submit an English score report from a recognized English proficiency test. (TOEFL 530, CBT 197, iBT 71, IELTS 5.5, NEW TEPS 327, CEFR B2 or higher)
 - ✗ Only accepted if date of getting score is before Nov. 11th, 2021.
 - ✗ Applicants do not need to submit an English score report if they are from a country whose official language is English (USA, UK, Canada, Australia, New Zealand, Republic of South Africa, Ireland).

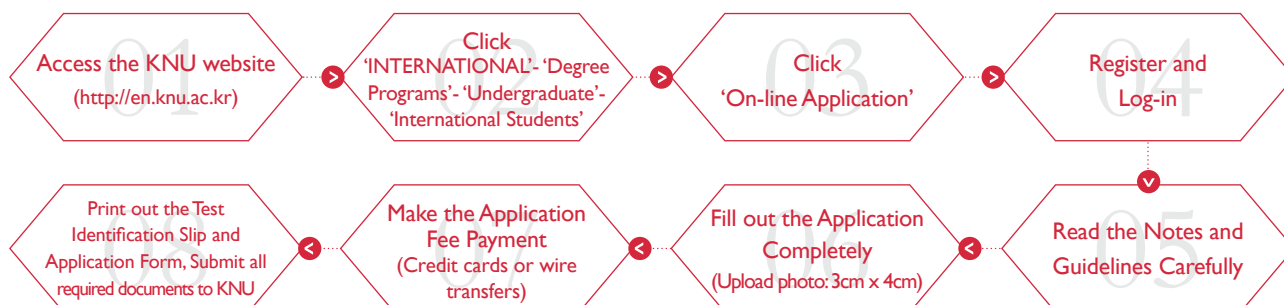
5. Application Procedure

I. Applications

A. On-line Application Deadline: Oct. 18 (Mon) 09:00am, 2021 – Nov. 5 (Fri) 18:00pm, 2021

- ① Online application site: To be announced at a later date on the KNU website. (<http://en.knu.ac.kr>)
- ② You will get an application number after completing the on-line application.

› Online application process



- ▶ The application will be processed once the application fee is paid.
- ▶ Modifications and cancellations are not allowed after completing the online application.
- ▶ If the applicant cancels their online application before Nov. 5th, 18:00pm, the application fee will be refunded 100%. After the application deadline, the application fee will not be refunded.

- ▶ After completing the online application, you must print out a test identification slip, and remember the application number (4 digits).
- ▶ Applicants who fail to submit the required documents by the specified date (Nov. 11th, 2021), even if their online application is completed, will be excluded from the screening process.
- ▶ Please complete your application in advance to avoid a system overload on the last day of the application period.
- ▶ Online application inquiries: [Uway apply] Tel: +82-1588-8988

B. Submission of Application Documents

- ① Deadline: Oct. 18 (Mon), 2021 – Nov. 11 (Thu), 2021, 18:00
- ② Where to submit: Office of International Affairs (첨성인미래관 2nd Fl.)
- ③ How to submit: Applicants should submit completed and printed application forms downloaded from the online application site along with supplementary documents.

2. Qualification Screening

A. Screening period: Nov. 12 (Fri), 2021 – Nov. 23 (Tue), 2021

B. Screening Method: Examination of the suitability of applicants' academic background and language proficiency, so as to be deemed as "qualified" or "unqualified."

3. Interviews

A. Period

- ① First preference: Nov. 24 (Wed), 2021 – Dec. 2 (Thu), 2021
- ② Second preference: by Dec. 13 (Mon), 2021

B. How to interview: In-person interview or non face-to-face interview(e.g. ZOOM) with the department.

- ① Applicants will be individually notified of date and location of interviews.
- ② Applicants who are not selected for their first department preference will be interviewed for their second preference.

4. Notification of Admission Results

A. When: Jan. 5 (Wed), 2022 (expected)

B. Method of Notification: Individual emails will be sent.

6. Required Documents

1. Application Documents

Required documents	Freshman	Transfer	Remark
① Completed application form	○	○	Print the online application and submit with other documents.
② Statement of Purpose and Study Plan	○	○	KNU format on KNU website, in English or Korean
③ Graduation certificate (or proof of completion) from High School	○	○	Chinese applicants Notarized certificate and Certificate issued from "xuexinwang"
④ Official Transcript from High School	○	○	
⑤ Graduation certificate (or enrollment certificate) from College (or University)	×	○	
⑥ Official transcripts from College (or university) * Transcripts must include earned credits and grades in percentage	×	○	Others Apostille or Certificate verified by the embassy
⑦ English or Korean proficiency test results (TOPIK, IELTS, etc.) * Only accepted if expiry date is after Oct. 18th, 2019.	○	○	Certificate must not exceed 2 years past issuance.

Required documents	Freshman	Transfer	Remark
⑧ Test identification slip of the 78th and 79th TOPIK exam	△	△	Applicants who take the 78th and 79th TOPIK exam must submit.
⑨ Certificate of enrollment (or completion) and transcript at a Korean Language Institute (if applicable)	△	△	Applicants who are taking a Korean language course in Korea must submit this certificate.
⑩ Copy of applicant's passport	○	○	Page with photo and passport number
⑪ Copy of Alien Registration Card, front and back	△	△	Only for applicants who are in Korea.
⑫ Certificate of parents' nationality and parent-child relationship between the applicants and his/her parents.	○	○	Refer to Note ③.

※ NOTE

- ① All required documents must be submitted in person or by post. (Email applications will not be accepted.)
- ② All required documents must be submitted in the order of the list above. (Do not use staplers, clips, etc.)
- ③ Examples of relationships between the applicants and his or her parents:

Examples of Family Census Register

China: 户口本或是亲属关系公证; Philippines: Family Census; Indonesia: KARTU KELUARGA; Bangladesh: Birth Certificate (জন্ম কাগজ or জন্ম সাইটিফিকেট); Vietnam: So Ho Khau or Giay khai sinh; Mongolia: Family Registration Certificate; Pakistan: Family Certificate, Sri Lanka: Birth Certificate (பாவுலரி); Myanmar: Family Certificate (இந்திய உரிம); Nepal: Birth Certificate (जन्मदाला); Kyrgyzstan, Kazakhstan, Uzbekistan, Ukraine, Thailand: Birth Certificate

- ▷ If one of his or her parents remarried to a Korean, additional certificate(e.g., Family Relation Certificate, Resident Registration Certificate, etc.) is required to submit to prove if the applicant is adopted.
- ④ Prospective graduates must submit their expected certificate of graduation indicating the expected graduation date (year and month).
The final certificate of graduation and verification certificate(Chinese :“xuexinwang”certificate / Others: Apostille or Certificate verified by the embassy) should be submitted by the mid-January, 2022.
Transcripts including the final semester must be submitted by Feb. 28th (Mon), 2022.
- ⑤ Applicants for the Department of Design must submit a portfolio of at least 10 pages and a certificate of completion from a Korean Language Institute indicating over one year of study.
- ⑥ Applicants for the Department of Fine Arts must submit a portfolio of at least 10 pages.
- ⑦ Passport: The expiration date must be after the semester start date.
※ Applicants with Uzbek nationality must submit a new passport which is available for overseas travel.
- ⑧ Documents in other languages must be accompanied by a notarized Korean or English translation.
(Certificate must be notarized within 6 months of submission.)

2. Financial Documents

A. For Whom: Applicants who pass the department interview

B. Submission period: From the date of announcement of interview result until Dec. 24 (Fri), 2021

C. Required documents must meet one of the following criteria ①, ②, or ③:

- ① If the applicant is the financial guarantor; self-financing the cost of study:
→ Submit the original bank certificate of deposit balance (in English) showing the amount of at least US\$18,000 in the applicant's name.
- ② If the financial guarantor is a parent:
→ Submit the original bank certificate of deposit balance (in English) showing the amount of at least US\$18,000 in the parent's name.
→ Employment Certificate or Business Registration Certificate from a parent
※ Brothers and sisters can be guarantors only in case of the parents' absence.
- ③ Scholarship certificate from other organizations: If applicants are financially supported from their own countries' government or another organization

※ If the total amount of scholarship or support funds are less than US\$18,000, the applicant will have to submit the original bank certificate of deposit balance for the remaining amount as required per ① or ②.

※ NOTE

1. Certificates without an expiration date must be issued within one month of submission.
2. Certificates with an expiration date must be valid until March 2022.
3. Documents in other languages must be accompanied by a notarized Korean or English translation.

3. Verification Documents

A. For Whom: Prospective graduates who didn't submit the verification documents at the time of application

B. Submission period: by the middle of January, 2022 (The exact schedule will be announced later)

※ NOTE

1. Certificate of Admission can be issued after submitting the verification documents below.
2. Failure to submit verification documents by Feb. 28th, 2022 may result in the cancellation of admission.
3. Applicants who graduated from school in S. Korea may submit an original certificate of graduation instead of verified copies.

C. Required documents: select one of the documents below.

- ① Applicants who have completed courses in China:
 - Documents confirmed by the China Academic Degree & Graduate Education Development Center (<http://www.chsi.com.cn/xlrz>)
- ② Applicants who have completed courses in other countries outside S. Korea and China submit one of following two documents:
 - Apostille Certificate of your previous academic documents (Please refer to [Appendix I])
 - Documents verified by the Korean Embassy in other countries or the Embassy in Korea

7. Application Fee

1. Application fee

₩60,000 (Korean currency)

2. How to pay

A. The application fee must be paid using the on-line application program.

※ Note: Please refer to the on-line instructions when you do the on-line application.

B. If the application fee is not paid during the application period, the application will be canceled.

C. You will get an application number after the application fee has been paid.

※ Note: It is not possible to revise the content of the application after the application fee has been paid.

3. Refund

A. For Whom: Applicants who didn't pass the qualification screening

B. Amount of Refund: ₩20,000 (Korean currency)

C. How to refund: 20,000won will be refunded to the applicant's account.

※ Note: Applicants who fail the qualification screening must submit a copy of the bankbook (Korean bank) in the applicant's name by **Nov. 26th(Fri), 2021**. Only for those who don't have a Korean bank account can submit a copy of the friend's bank account. But, Overseas remittance is not available.

8. Important Notes for Applicants

1. All documents should be in Korean or English. Documents in other languages must be accompanied by a notarized Korean or English translation.
2. If any required documents are found to be false or counterfeit, your application will be canceled.

3. The Office of International Affairs is not responsible for application cancellation due to incorrect contact information (address and phone number etc.)
4. If an applicant's visa is not issued, or is rejected, his or her application will be canceled.
5. Applicants receiving a scholarship of more than US\$18,000 from another institution are not required to submit a certificate of financial guarantee; however, they must submit a certificate/letter of confirmation from the institution that will pay their tuition during their period of study at KNU.
6. No submitted documents will be returned to the applicant. (Original copies of graduation certificates will be returned after the screening process is completed.)
7. If the applicant does not have sufficient academic ability, he/she may not be selected.
8. According to the regulations for Recognition of Graduation Qualification at KNU, international students who are enrolled at KNU from spring semester 2022 must have a "TOPIK" certificate for level 4 or higher before graduation.
9. International students who are admitted to the university or enrolled at KNU must have Korean health insurance. According to the National Health Insurance Act and its Enforcement Decree, International students who stay in Korea more than 6 months must have National Health Insurance(국민건강보험) in Korea.
10. Further details, if not stated in this guide, will be in accordance with the Office of International Affairs at KNU.
11. These admission guidelines were originally written in Korean and translated into English, Chinese and Vietnamese. Should there be any discrepancies, the Korean version supercedes translated versions.
12. Personal information of applicants will be collected and used for the admission process as shown below.
 - Articles collected and used: Name, Alien Registration No. Passport No. Address, Name of School graduated from, Telephone Number, Mobile Phone Number, Email, Language Grades, Period of Overseas Education, Period of Stay, Account Number, etc.
 - Purpose of collection and using: Admission Process, Visa, Academic Affairs, Scholarships, Statistics, Selection of Dormitory Residents, Admission Instructions

Receiver of Information		Provided Information	Purpose of Provision	Holding Period
KNU	University Headquarter (Registrar Office, Office of Student Affairs, Finance department, etc.)	Name, Alien Registration No., Address, Telephone No., Information of application, Name of School graduated from, etc.	Creating the school register, Selection of Scholarship students, Statistics, Tuition fee payment, etc.	Until the purpose of process is achieved.
	College, School and Department office	Name, Telephone No., Name of School graduated from, Language grades, etc.	Conducting the interview, etc.	
	Dormitory Office	Name, Alien Registration No., Information of Application, etc.	Selection of Dormitory residents, Sending the instructions, etc.	
Third Party	Ministry of Justice, Immigration office	Name, Alien Registration No., Address, Telephone No., Information of application, Grades, Name of School graduated from, etc.	Issuing the Certificate of Admission, Service for immigration, etc.	
	Korea Council for University Education	Name, Alien Registration No., Information of application, etc.	Using the application system, etc.	

9. Scholarships and Benefits

1. TOPIK Scholarships for New Students

- A. A level 3 "TOPIK" certificate: Scholarships for 16-20% of the tuition fee for the first semester.
- B. A level 4 "TOPIK" certificate: Scholarships for 40-42% of the tuition fee for the first semester.
- C. A level 5 "TOPIK" certificate: Scholarships for 80-84% of the tuition fee for the first semester.
- D. A level 6 "TOPIK" certificate: Scholarships for 100% of the tuition fee for the first semester.

2. Scholarships for students who complete 2 semesters of Korean language program at KNU :

Scholarships for 16-20% of the tuition fee for the first semester.

※ But, applicants can't get the TOPIK scholarships for New students and the Korean language program scholarships at the same time.

3. TOPIK Scholarships for enrolled students: Those who do not have a “TOPIK” certificate or have a level 3 “TOPIK” certificate when they enter KNU can receive scholarships after getting a “TOPIK” certificate for level 4 or higher.

4. Scholarships for Academic Excellence

- A. The top 7% of all international students receive an 80-84% scholarship for the following semester.
B. The top 30% of all international students receive a 16-20% scholarship for the following semester.

5. Students who live in the dormitory will be exempt from dormitory room fees for the first semester.

※ Due to limited budget, students who can enter the dormitory will be selected.

10. Tuition Fees (per semester as of 2021)

(1 Dollar: 1,150 Won)

Campus	College	Freshman	
		Korean Won	US Dollars
Daegu	Humanities / Teachers College	₩1,981,000	\$1723
	Humanities (Archaeology & Anthropology)	₩2,028,500	\$1764
	Natural Sciences / Human Ecology	₩2,379,000	\$2069
	Economics & Business Administration / Public Administration	₩1,954,000	\$1699
	Engineering / IT Engineering	₩2,531,000	\$2201
	Agriculture & Life Sciences	₩2,379,000	\$2069
	Agriculture & Life Sciences (Agricultural Economics)	₩1,981,000	\$1723
	Social Sciences	₩2,019,000	\$1756
	Music & Arts	₩2,610,000	\$2270
Sangju	Music & Arts(Fine Arts)	₩2,670,000	\$2322
	Ecology & Environmental Science	₩2,379,000	\$2069
	Ecology & Environmental Science [Ecological Environment Ecotourism(Ecotourism)]	₩1,981,000	\$1723
	Science & Technology	₩2,531,000	\$2201
	Science & Technology (Food and Food-service Industry)	₩2,379,000	\$2069

※ Amounts are subject to change.

11. Dormitory Fees (as of 2021)

Room & Board		Fees				Note
		Spring Semester	Fall Semester	Summer Vacation	Winter Vacation	
Room	2 people per room	₩526,700	₩517,500	₩251,400	₩359,500	
Board (3 meals per day)		₩811,200	₩760,800	₩494,400	₩415,200	Students can select one, two or three meals per day.

※ Amounts are subject to change.

※ Homepage of Dormitory: <http://dorm.knu.ac.kr> (Daegu Campus), <http://dorm.knu.ac.kr/scdorm> (Sangju Campus)

12. Contact Us

- Hyunju SEO (Ms.), Office of International Affairs
- Address: Cheomseongin Student Futures Support Bldg. 2nd floor (첨성인미래관 2층)
Kyungpook National University, Office of International Affairs, 80, Daehak-ro, Buk-gu, Daegu, 41566
- Tel) +82-53-950-2434, Fax) +82-53-950-2419, Email) globalhj@knu.ac.kr
- Office Hours: (Mon-Fri) 9:00am - 12:00pm / 1pm - 6pm
- Website: <http://www.knu.ac.kr> (Korean), <http://en.knu.ac.kr> (English), <http://cn.knu.ac.kr> (Chinese)

III. APPENDICESE

I. Apostille

Since July 14, 2007, the Republic of Korea has been part of the 1961 Hague Convention abolishing the Requirement of Legalization for Foreign Public Documents. The Convention provides for the use of simplified certification of public documents (including notarized documents) among countries that have joined the convention.

The Apostille ensures that public documents issued in one signatory country will be recognized as valid in another signatory country.

※ NOTE

Newly admitted students from countries that are signatories to the convention must meet the following requirements:

- ① Official certificates (transcripts, diplomas, etc.) from public schools or institutions should be submitted with the attachment of "Apostille."
- ② Official certificates (transcripts, diplomas, etc.) from private schools or institutions, however, should be officially notarized by a notary, agency, or any other authority competent under the law of the country of origin of the certificates, and then, should be submitted with the attachment of "Apostille."

Signatory Countries for Apostille certificates

Albania, Andorra, Antigua and Barbuda, Argentina, Armenia, Australia, Austria, Azerbaijan, Bahamas, Barbados, Bahrain, Belarus, Belgium, Belize, Bolivia, Bosnia-Herzegovina, Botswana, Brazil, Brunei Darussalam, Bulgaria, Burundi, Cape Verde, Chile, China, Colombia, Cook Islands, Costa Rica, Croatia, Cyprus, Czech Republic, Denmark, Dominica, Dominican Republic, Ecuador, El Salvador, Estonia, Eswatini, Fiji, Finland, France, Georgia, Germany, Greece, Grenada, Guatemala, Guyana, Honduras, Hungary, Iceland, India, Ireland, Israel, Italy, Jamaica, Japan, Kazakhstan, Korea, Kosovo, Kyrgyzstan, Latvia, Lesotho, Liberia, Liechtenstein, Lithuania, Luxembourg, Malawi, Malta, Marshall Islands, Mauritius, Mexico, Monaco, Mongolia, Montenegro, Morocco, Namibia, Netherlands, New Zealand, Nicaragua, Niue, Norway, Oman, Palau, Panama, Paraguay, Peru, Philippines, Poland, Portugal, Republic of Moldova, Republic of North Macedonia, Romania, Russian Federation, Saint Kitts and Nevis, Saint Lucia, Saint Vincent and the Grenadines, Samoa, San Marino, Sao Tome and Principe, Serbia, Seychelles, Singapore, Slovakia, Slovenia, South Africa, Spain, Suriname, Sweden, Switzerland, Tajikistan, Tonga, Trinidad and Tobago, Tunisia, Turkey, Ukraine, United Kingdom, United States of America, Uruguay, Uzbekistan, Vanuatu, Venezuela

- ※ For information regarding how to get an Apostille, please refer to the website
<http://www.hcch.net> → Apostille Section

2. Homepages of KNU Academic Departments

College	Department (Major)	Homepage
Humanities	Korean Language & Literature	http://korean.knu.ac.kr (Korean, English)
	English Language & Literature	http://english.knu.ac.kr (Korean, English)
	History	https://khistory-eng.knu.ac.kr (English)
	Philosophy	http://philosophy.knu.ac.kr (Korean, English)
	French Language & Literature	http://france.knu.ac.kr (Korean)
	German Language & Literature	http://german.knu.ac.kr (Korean)
	Chinese Language & Literature	http://chinese.knu.ac.kr (Korean, English, Chinese)
	Archaeology & Anthropology	http://aran.knu.ac.kr (Korean)
	Japanese Language & Literature	http://japan.knu.ac.kr (Korean)
	Korean Literature in Chinese Characters	http://hanmun.knu.ac.kr (Korean, English)
	Russian Language & Literature	http://knurussian.kr (Korean, English)
Social Sciences	Political Science & Diplomacy	http://politics.knu.ac.kr (Korean)
	Sociology	http://socio.knu.ac.kr (Korean)
	Geography	http://geog.knu.ac.kr (Korean, English)
	Psychology	http://psy.knu.ac.kr (Korean)
	Library & Information Science	http://widit.knu.ac.kr/lis/notice.cgi (English)
	Social Welfare	http://knusw.knu.ac.kr (Korean, English)
	Media and Communication	http://masscom.knu.ac.kr (Korean)
Natural Sciences	Mathematics	http://math.knu.ac.kr (Korean)
	Physics	http://old.physicsknu.org/eng (English)
	Chemistry	http://chem.knu.ac.kr (Korean, English)
	Life Sciences (Biology)	http://bio.knu.ac.kr/en/index.do (Korean, English)
	Life Sciences (Biotechnology)	http://biotech.knu.ac.kr (Korean)
	Earth System Science (Geology)	http://geology.knu.ac.kr (Korean)
	Earth System Science (Astronomy & Atmospheric Science)	http://hanl.knu.ac.kr (Korean)
	Earth System Science (Oceanography)	http://ocean.knu.ac.kr (Korean)
	Statistics	http://stat.knu.ac.kr/eng (English)
Economics & Business Administration	Economics & Trade	http://econ.knu.ac.kr (Korean, English)
	Business Administration	http://biz.knu.ac.kr (Korean, English)
Engineering	Materials Science & Engineering (Materials Science and Metallurgical Engineering)	http://metal.knu.ac.kr (Korean, English)
	Materials Science & Engineering (Electronic Materials Engineering)	http://emse.knu.ac.kr/main (Korean)
	Mechanical Engineering	http://me.knu.ac.kr (Korean)
	Applied Chemistry	http://appchem.knu.ac.kr (Korean)
	Chemical Engineering	http://chemeng.knu.ac.kr/eng (English)
	Architecture	http://arch.knu.ac.kr (Korean)
	Civil Engineering	http://civil.knu.ac.kr/main (Korean)
	Polymer Engineering	http://polymer.knu.ac.kr (Korean, English)
	Textile System Engineering	http://textile-eng.knu.ac.kr (Korean)
	Environmental Engineering	https://env.knu.ac.kr (Korean)
	Energy Engineering	http://energyknu.ac.kr (Korean)
IT	Electronics Engineering	http://see.knu.ac.kr/eng (English)

College	Department (Major)	Homepage
IT	Computer Science	http://computer.knu.ac.kr/eng (English)
	Electrical Engineering	http://electric.knu.ac.kr (Korean)
Agriculture & Life Sciences	Applied Biosciences (Environment and Life Chem.)	http://kac.knu.ac.kr (Korean)
	Applied Biosciences (Plant Biosciences)	http://pbs.knu.ac.kr (Korean)
	Applied Biosciences (Applied Biology)	http://agbl.knu.ac.kr (Korean)
	Food Science & Technology	https://kbuilder.knu.ac.kr/HOME/foodbio/index.htm (Korean)
	Forest Sciences and Landscape Architecture (Forestry)	http://forestry.knu.ac.kr (Korean)
	Forest Sciences and Landscape Architecture (Wood & Paper Science)	http://wood.knu.ac.kr (Korean)
	Forest Sciences and Landscape Architecture (Landscape Architecture)	http://land.knu.ac.kr (Korean)
	Horticultural Science	https://horti.knu.ac.kr (Korean, English)
	Agricultural Civil & Bio-Industrial Engineering (Agricultural Civil Engineering)	http://acen.knu.ac.kr (Korean)
	Agricultural Civil & Bio-Industrial Engineering (Bio-Industrial Machinery Engineering)	http://bime.knu.ac.kr (Korean)
	Bio-fibers and Materials Science	http://biofiber.knu.ac.kr (Korean)
	Food and Resource Economics	http://agec.knu.ac.kr (Korean)
Music & Arts	Music	http://music.knu.ac.kr (Korean)
	Korean Traditional Music	http://kmusic.knu.ac.kr (Korean)
	Fine Arts	http://arts.knu.ac.kr (Korean)
	Design	http://vcd.knu.ac.kr (Korean)
Teachers College	Korean Language and Literature Education	http://koredu.knu.ac.kr (Korean)
	History Education	http://hisedu.knu.ac.kr (Korean)
Human Ecology	Child Studies	http://child.knu.ac.kr (Korean)
	Clothing and Textiles	http://fashion.knu.ac.kr (Korean)
	Food Science and Nutrition	http://fsnu.knu.ac.kr (Korean)
Public Administration	Public Administration	http://puad.knu.ac.kr (Korean, English)
Ecology & Environmental Science	Ecology & Environmental System (Plant Resources and Environment)	http://scplant.knu.ac.kr (Korean)
	Ecology & Environmental System (Forest Environment and Resources)	http://forest.knu.ac.kr (Korean)
	Entomology	http://abio.knu.ac.kr (Korean)
	Tourism	http://tour.knu.ac.kr (Korean, English)
	Leisure & Sports	http://dols.knu.ac.kr (Korean)
	Animal Science	http://ani.knu.ac.kr (Korean, English)
	Animal Biotechnology	http://anibiotech.knu.ac.kr (Korean)
	Horse/Companion and Wild Animal Science	http://axt.knu.ac.kr (Korean)
Science & Technology	Advanced Civil Environmental Engineering (Constructional Disaster Prevention Engineering)	https://endisaster.knu.ac.kr (English)
	Advanced Civil Environmental Engineering (Civil Environmental Engineering)	http://ue.knu.ac.kr (Korean)
	Precision Mechanical Engineering	http://pme.knu.ac.kr (English)
	Automotive Engineering	http://auto.knu.ac.kr (Korean)
	Software	http://se.knu.ac.kr (Korean)
	Food and Food service Industry	http://ffsi.knu.ac.kr (Korean)
	Nano & Materials Science and Engineering	http://nanosj.knu.ac.kr (Korean)
	Convergence & Fusion System Engineering	http://cfse.knu.ac.kr (Korean)
	Textile Engineering & Fashion Design (Textile Engineering)	http://textile.knu.ac.kr (Korean)
	Textile Engineering & Fashion Design (Fashion Design)	http://style.knu.ac.kr (Korean)

3. Location of Department Offices and Telephone Numbers

College	Department (Major)		Location	Bldg. No.	Tel. (area code: 053)
Humanities	Korean Language & Literature		College of Humanities, 406	104	950-5106
	English Language & Literature		Graduate School Bldg. 514	107	950-5120
	History		Graduate School Bldg. 419		950-5135
	Philosophy		College of Humanities, 410	104	950-5148
	French Language & Literature		Graduate School Bldg. 417	107	950-5159
	German Language & Literature		Graduate School Bldg. 418		950-5169
	Chinese Language & Literature		Graduate School Bldg. 402		950-5178
	Archaeology & Anthropology		Graduate School Bldg. 518		950-5186
	Japanese Language & Literature		Graduate School Bldg. 415		950-6150
	Korean Literature in Chinese Characters		Graduate School Bldg. 404		950-6160
	Russian Language & Literature		Graduate School Bldg. 210		950-6170
Social Sciences	Political Science & Diplomacy		College of Social Sciences. 506	310	950-5206
	Sociology		College of Social Sciences. 414		950-5218
	Geography		College of Social Sciences. 412		950-5227
	Psychology		College of Social Sciences. 209		950-5244
	Library & Information Science		College of Social Sciences. 408		950-5236
	Social Welfare		College of Social Sciences. 210		950-5251
	Media and Communication		College of Social Sciences. 406		950-5259
Natural Sciences	Mathematics		College of Natural Sciences. 304	209	950-5306
	Physics		Natural Science Bldg. I, 101	208	950-5316
	Chemistry		Chemistry Bldg. 207	407	950-5329
	Life Sciences	Biology	Biology Bldg. 215	217	950-5342
		Biotechnology	Biotechnology Bldg. 205	207	950-6349
	Earth System Science		Natural Science Bldg. 2, 113 / 314 Biotechnology Bldg. 101-3	210 207	950-5396, 5354, 6360
	Statistics		College of Natural Sciences. 411-2	209	950-5364
Economics & Business Administration	Economics & Trade		College of Economics & Business Administration 2, 105	309	950-5406, 5407

College	Department (Major)		Location	Bldg. No.	Tel. (area code: 053)
Economics & Business Administration	Business Administration		College of Economics & Business Administration 2, 317	309	950-5439, 5417
Engineering	Materials Science & Engineering	Materials Science and Metallurgical Engineering	College of Engineering Bldg.3, 509	409	950-5559
		Electronic Materials Engineering	College of Engineering Bldg.8, 215	419	950-5631
	Mechanical Engineering		College of Engineering Bldg.3, 311	409	950-5568, 5569
	Applied Chemistry		College of Engineering Bldg.1, 213	404	950-5581
	Chemical Engineering		College of Engineering Bldg.9, 109	406	950-5615
	Architecture		College of Engineering Bldg.2, 316	401	950-5590
	Polymer Engineering		College of Engineering Bldg.9, 119	406	950-5623
	Civil Engineering		College of Engineering Bldg.2, 216	401	950-5607
	Textile System Engineering		College of Engineering Bldg.1, 315	404	950-5638
	Environmental Engineering		College of Engineering Bldg.6, 313	410	950-6580
	Energy Engineering		College of Engineering Bldg.7, 209	411	950-8970
IT	Electronics Engineering		College of IT Bldg.1, 409	418	950-5506
	Computer Science		College of Engineering Bldg.9, 413	406	950-5550, 6370
	Electrical Engineering		College of Engineering Bldg.8, 308	419	950-5600
Agriculture & Life Sciences	Applied Biosciences	Environment and Life Chemistry	College of Agriculture & Life Science Bldg.1, 405	201	950-5714
		Plant Biosciences	College of Agriculture & Life Science Bldg.4, 207	125	950-5706
		Applied Biology	College of Agriculture & Life Science Bldg.2, 209	203	950-5758
	Food Science & Biotechnology	Food Biotechnology	College of Agriculture & Life Science Bldg.3, 202	202	950-5772
		Food Biomaterials	College of Agriculture & Life Science Bldg.3, 328		950-5750
		Food Application Technology	College of Agriculture & Life Science Bldg.2, 410-1	203	950-7761
	Forest Sciences and Landscape Architecture	Forestry	College of Agriculture & Life Science Bldg.1, 416	201	950-5744
		Wood & Paper Science	College of Agriculture & Life Science Bldg.3, 403	202	950-5795
		Landscape Architecture	College of Agriculture & Life Science Bldg.1, 506	201	950-5779
	Horticultural Science		College of Agriculture & Life Science Bldg.4, 409	125	950-5721

College	Department (Major)		Location	Bldg. No.	Tel. (area code: 053)
Agriculture & Life Sciences	Agricultural Civil & Bio-Industrial Engineering	Agricultural Civil Engineering	College of Agriculture & Life Science Bldg.2, 106	203	950-5730
		Bio-Industrial Machinery Engineering	College of Agriculture & Life Science Bldg.4, 603	125	950-5790
	Bio-fibers and Materials Science		College of Agriculture & Life Science Bldg.2, 309	203	950-5737
	Food and Resource Economics		College of Agriculture & Life Science Bldg.4, 807	125	950-5765
Music & Arts	Music		College of Music & Visual Arts, 302	120	950-5656
	Korean Traditional Music		College of Music & Visual Arts, 405		950-5670
	Fine Arts		Fine Art & Design Bldg. 105	119	950-5680
	Design		Fine Art & Design Bldg. 104-1		950-5694
Teachers College	Korean Language and Literature Education		Teacher's College 623	N.A.	950-5821
	History Education		Teacher's College 722		950-5848
Human Ecology	Child Studies		College of Human Ecology 214	307	950-6210
	Clothing and Textiles		College of Human Ecology 313		950-6220
	Food Science and Nutrition		College of Human Ecology 115		950-6230
Public Administration	Public Administration		College of Law 113	311	950-5474
College	Department (Major)		Location	Bldg. No.	Tel. (area code: 054)
Ecology & Environmental Science	Ecology & Environmental System	Plant Resources and Environment	Bldg. 6, 112	06	530-1200
		Forest Environment and Resources	Bldg. 6, 417		530-1240
	Entomology		Bldg. 6, 216	06	530-1210
	Tourism		Main Administration Bldg. 207	04	530-1380
	Leisure & Sports		Bldg. 1, 209	01	530-1430
	Animal Science		Bldg. 6, 323	06	530-1220
	Animal Biotechnology		Bldg. 6, 426		530-1940
	Horse/Companion and Wild Animal Science		Bldg. 6, 327		530-1950

College	Department (Major)		Location	Bldg. No.	Tel. (area code: 054)
Science & Technology	Advanced Civil Environmental Engineering	Constructional Disaster Prevention Engineering	Bldg. 7, 210	07	530-1250
		Civil Environmental Engineering	Bldg. 5, 112	05	530-1440
	Precision Mechanical Engineering		Bldg. 7, 304	07	530-1270
	Automotive Engineering	Environment Friendly Vehicle Engineering	Bldg. 2, 305	02	530-1400
		Intelligent Vehicle Engineering	Bldg. 2, 304		530-1136
	Software		Bldg. 5, 211	05	530-1450
	Food and Food service Industry		Bldg. 9, 213	09	530-1300
	Nano & Materials Science and Engineering	Advanced Materials Science & Engineering	Bldg. 2, 104	02	530-1410
		Energy Chemical Engineering	Bldg. 7, 418	07	530-1330
	Convergence & Fusion System Engineering	Aeronautical satellite system Engineering	Bldg. 8, 311	08	530-1490
		Plant system Engineering	Bldg. 9, 413	09	530-1480
	Textile Engineering & Fashion Design	Textile Engineering	Bldg. 8, 213	08	530-1280
		Fashion Design	Bldg. 9, 311	09	530-1310



www.knu.ac.kr

