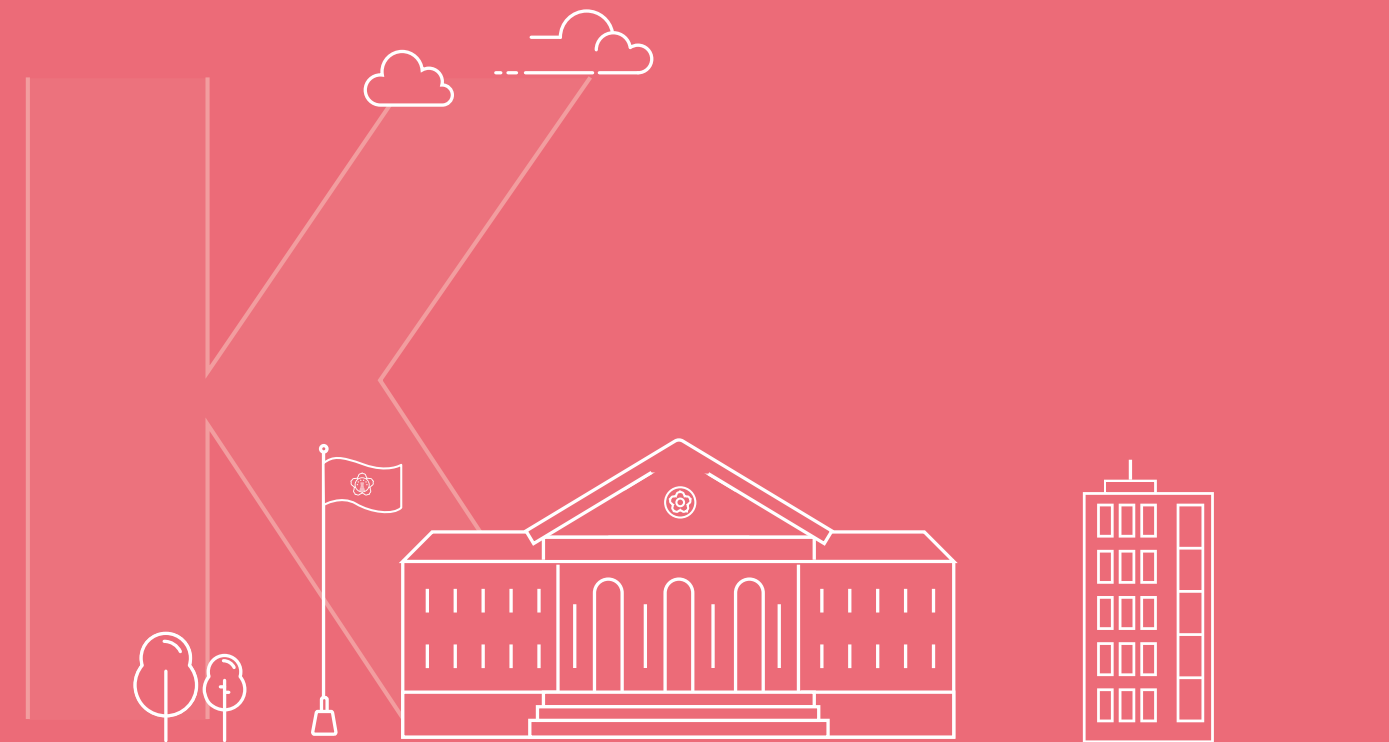


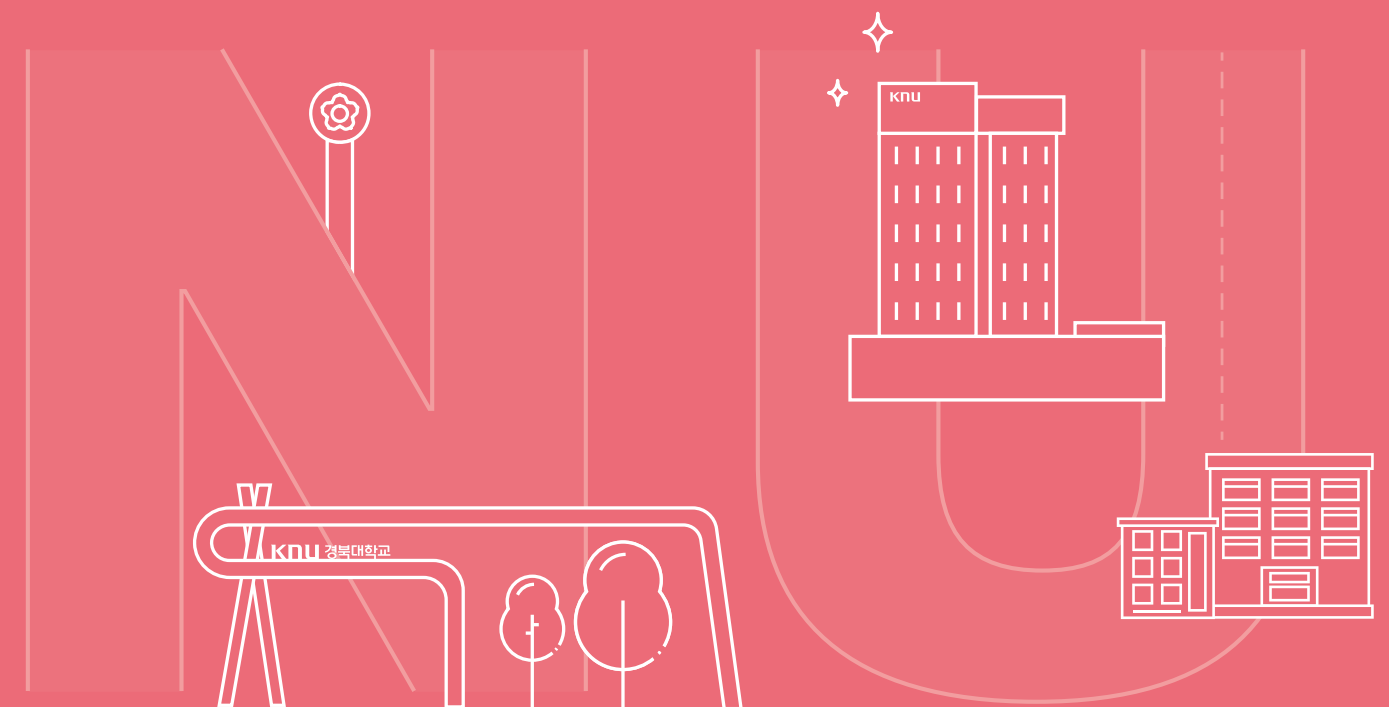


<http://en.knu.ac.kr>



Admission Guide

for Undergraduate International Students



CONTENTS

I . ABOUT KYUNGPOOK NATIONAL UNIVERSITY

1. History	03
2. Status	03
3. KNU Honors	04
4. Programs for International Students	05

III. APPENDICES


1. Apostille	18
2. Homepage Addresses of Academic Departments	19
3. Location of Department Offices and Telephone no.	21

II. ADMISSION GUIDE

1. Admission Process	06
2. Schedule	06
3. Number of Admissions and Academic Departments	07
4. Eligibility	09
5. Application Procedure	11
6. Required Documents	13
7. Application Fee	14
8. Important Notes for Applicants	15
9. Scholarships and Benefits	16
10. Tuition Fees	16
11. Dormitory Fees	17
12. Contact Us	17


I. ABOUT KYUNGPOOK NATIONAL UNIVERSITY

HISTORY




1946

Colleges of Education, Medicine and Agriculture in Daegu were upgraded to National Colleges




1951

Colleges of Education, Medicine and Agriculture, Liberal Arts and Sciences, Law and Political Sciences combined to create Kyungpook National University



1953


First graduate school established




2022

Kyungpook National University is now comprised of 17 colleges and 3 schools, 94 Majors, 13 graduate schools, 134 Research Centers


STATUS




STUDENTS IN TOTAL
34,099




INTERNATIONAL STUDENTS
1,737




GRADUATE STUDENTS
6,072



UNDERGRADUATE STUDENTS
28,027



FULL-TIME FACULTY MEMBERS
1,218



ADMINISTRATIVE STAFF MEMBERS
1,170

Main Campus



Sang-ju Campus



Medical Town



Medical Campus



KNU Honors

Credits

- Awarded IEQAS (International Education Quality Assurance System) accreditation for 8 consecutive years by the Korean Ministry of Education.
- **1st among national universities in Korea**

2020 ~ 2021

QS World University Rankings 2021	THE World University Rankings 2021	US News & World Report 'Best Global Universities'	THE World University Impact Rankings (54th in the world)
Leiden Ranking 2020 Number of top 1% publication	World University Rankings from Shanghai Jiao Tong University, Institute of Higher Education Evaluation	The largest number of 2020 GKS recipients (24 students from 19 different countries)	Center for World University Rankings 2020

Student-Centered University

- 74.5 billion won worth of scholarships have been provided to KNU students, 35,0468 total beneficiaries and a 64.5% benefit rate
- KNU offers opportunities to study in the best universities in the world. (University of California, Berkeley, Oxford University, Yale University)
- KNUPIA mobile application for KNU students
 - KNUPIA provides Mobile Student ID feature
 - KNUPIA provides access to campus facilities with a QR code feature
 - Announcement can be made via push notifications and banners
- KNU is the only national university that has a hospital-level health care center
- KNU students can get up to two medical check-ups for free

Best Teaching Ability

- Performance of SCI-level thesis per professor ranked 1st among national universities in Korea.
- The number of research papers in International Journals ranked 1st among national universities in Korea
- 2 professors in KNU were named on the world's most influential researchers list (HCR).
- 4 professors in KNU published papers in the Journal of Nature, Science.

Lots of Talented Students

- Intensive promotion in the field of convergence education & research
 - Research : ITA (Artificial Intelligence, Biomedical Convergence Science & Technology, Robot and Smart System Engineering, Hydrogen & Renewable Energy), AIR (Light Convergence Global Leaders, Data Science Technology, Agricultural Life Convergence, NBIT Convergence High-tech Materials)
 - Education : Convergence Promotional Project (Agricultural Development in North Korea, International Education, Northern Asian Culture & Trade), preexisting Interdisciplinary Studies (Business Administration, Psychology, Food Science and Nutrition, Computer Science and Engineering)
- Maintained employment rate of graduates ranked 1st among national universities in Korea
- High number of employments among graduates
 - 1,278 employed by large companies, 680 employed by public institutions over the past 2 years

Investments from the Government

- Amount of financial support from the government : most among national universities in Korea (318,116 million won)
- Win orders for R&D projects (20 projects, 231,760 million won)
- The highest level of Governmental Funding

Special Programs for International Students



Cultural Experience Program

Provides cultural experience programs that can enhance understanding of Korea and improve adaptability to life in Korea.
(ex, Daegu City Tour, Cultural Trip, International Day, K-pop Dance Festival, etc.)

Tutor Program

1:1 matching system between a senior student in your department and an international student, to help international students overcome difficulties they may experience in their studies.

Assistance in Employment

To support international students, KNU offers various special lectures such as employment training programs, internship programs and employment information.

Orientation for New International Students

KNU holds an orientation for new incoming students to help them quickly adapt to life in Korea. Through the orientation, international students gain valuable information such as course registration, visa, insurance and student ID card acquisition.

Graduation Ceremony

KNU holds a graduation ceremony for international students who graduate from KNU every semester to celebrate the students' achievements.

International Programs

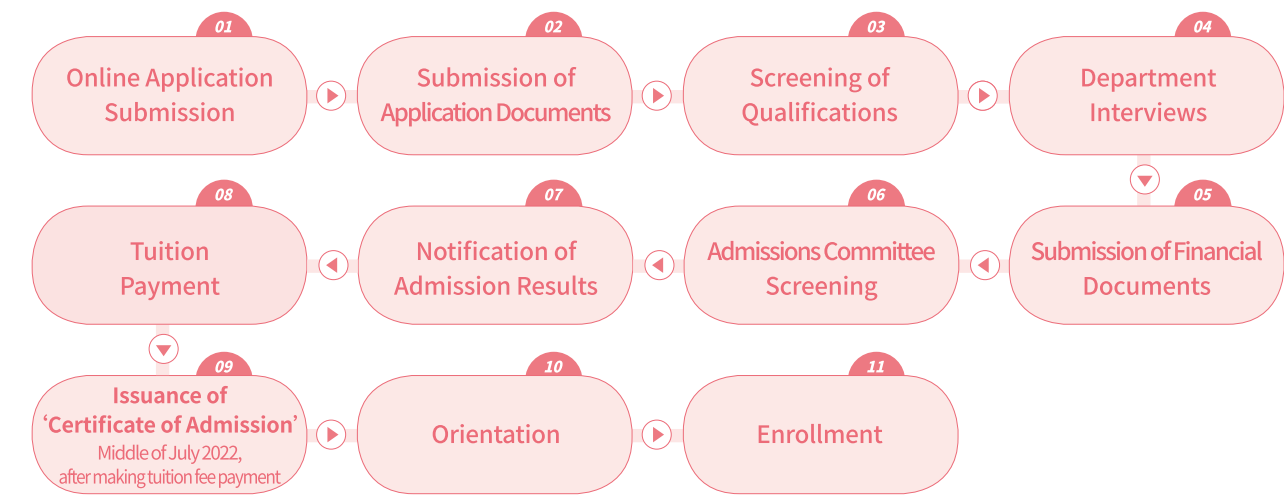
KNU offers a variety of international programs for international students such as an exchange program and summer school program, and provides many opportunities to study abroad.

1:1 Counseling for International Students

International students can receive counseling from their department office and the Office of International Affairs about difficulties in their studies and personal life.

II. ADMISSION GUIDE

1. Admission Process



2. Schedule

Procedures		Time	Remarks
Online Application Open		April 18 (Mon), 09:00 – May 6 (Fri), 2022, 18:00	Refer to KNU website (http://en.knu.ac.kr)
Submission of Application Documents		April 18 (Mon), 09:00 – May 12 (Thu), 2022, 18:00	To the Office of International Affairs (첨성인미래관 2nd Fl.), 6. Required documents ①~⑫
Screening of Qualifications for Application		May 13 (Fri) - May 24 (Tue), 2022	Applicants will be individually notified of screening results
KNU Korean language test		May 17 (Tue) - May 18 (Wed), 2022	Online oral-test
Department Interviews	1st Preference Department	May 25 (Wed) - June 3 (Fri), 2022	Departments will provide notice (with an interview schedule if available)
	2nd Preference Department	By June 15 (Wed), 2022	Only for applicants who are not selected in the department interview for their first preference
Submission of Financial Documents		By June 24 (Fri), 2022	Only for applicants who pass the department interview
TOPIK Certificate Submission		81st : By May 20 (Fri), 13:00pm 82nd : By July 1 (Fri), 13:00pm	Only for applicants who submit a test identification slip
Admissions Committee Screening		By June 29 (Wed), 2022	
Notification of Admission Results		July 5 (Tue), 2022	Individual emails will be sent
Payment of tuition fees (Registration)		Middle of July, 2022	The exact schedule will be announced later
		From the middle of July, 2022	
Issuance of ‘Certificate of Admission’		· Overseas Residents : International Post with address written on application after paying the tuition fee and submitting the Verification documents · Applicants residing in Korea : Pick up by visiting the Office of International Affairs at Kyungpook National University after paying the tuition fee and submitting the Verification documents	
Submission of Verification Documents		By the middle of July, 2022	The exact schedule will be announced later

3. Number of Admissions and Academic Departments

1. Number of Admissions

International student admissions are based on a departmental limit.

※ The following departments will select a limited number of students per semester.

- Department of Economics & Trade : around 5 people
- Department of Korean Language and Literature Education : 3 people
- Department of History Education : 1 person

2. Academic Departments

Daegu	College	Freshman		Transfer (2nd preference not available)	
Humanities	Korean Language & Literature	English Language & Literature	Korean Language & Literature	English Language & Literature	
	History	Philosophy	History	Philosophy	
	French Language & Literature	German Language & Literature	French Language & Literature	German Language & Literature	
	Chinese Language & Literature	Archaeology & Anthropology	Chinese Language & Literature	Archaeology & Anthropology	
	Japanese Language & Literature	Korean Literature in Classical Chinese	Japanese Language & Literature	Korean Literature in Classical Chinese	
	Russian Language & Literature		Russian Language & Literature		
Social Sciences	『Political Science & Diplomacy』	Sociology	Political Science & Diplomacy	Sociology	
	『Geography』	Library & Information Science	Geography	Library & Information Science	
	Psychology	Social Welfare	Psychology	Social Welfare	
	Media and Communication		Media and Communication		
Natural Sciences	『Mathematics』	『Physics』	Mathematics	Physics	
	『Chemistry』	『Life Sciences (Life Sciences and Biotechnology)』	Life Sciences (Biology)	Life Sciences (Life Sciences and Biotechnology)	
	『Earth System Science』	Life Sciences (Biology)	Chemistry	Statistics	
	『Statistics』		Earth System Science (Geology)	Earth System Science (Astronomy and Atmospheric)	
			Earth System Science (Oceanography)		
Economics & Business Administration	Business Administration	Economics & Trade	Business Administration	Economics & Trade	
Engineering	Materials Science & Engineering	Mechanical Engineering	Materials Science&Engineering (Materials Science and Metallurgical Engineering)	Materials Science & Engineering (Electronic Materials Science and Engineering)	
	Architecture (Architecture)	Architecture (Architectural Engineering)	Mechanical Engineering	Civil Engineering	
	Civil Engineering	Applied Chemistry	Architecture (Architectural Engineering)	Architecture (Architecture)	
	Chemical Engineering	『Polymer Science and Engineering』	Applied Chemical Engineering (Applied Chemistry)	Applied Chemical Engineering (Chemical Engineering)	
	Textile System Engineering	Environmental Engineering	Polymer Science and Engineering	Textile System Engineering	
	Energy Engineering		Environmental Engineering	Energy Engineering	
IT Engineering	Electronics Engineering	Electrical Engineering	Electronics Engineering	Electrical Engineering	
	Computer Science and Engineering	Computer Science and Engineering (Global software Convergence)	Computer Science and Engineering	Computer Science and Engineering (Global software Convergence)	
Agriculture & Life Sciences	『Applied Biosciences』	『Food Science & Biotechnology』	Applied Biosciences	Food Science & Biotechnology	

Sangju | Located in Sangju city

College	Freshman		Transfer (2nd preference not available)	
Agriculture & Life Sciences	『Forest Sciences and Landscape』	『Horticultural Sciences』	Forest Sciences and Landscape (Wood & Paper Science)	Forest Sciences and Landscape (Forestry)
	『Agricultural Civil & Bio-Industrial Engineering』	『Bio-fibers and Materials Science』	Forest Sciences and Landscape (Landscape Architecture)	Horticultural Science
	『Food and Resource Economics』		Agricultural Civil & Bio-Industrial Engineering (Bio-Industrial Machinery Engineering)	Agricultural Civil & Bio-Industrial Engineering (Agricultural Civil Engineering)
			Bio-fibers and Materials Science	Food and Resource Economics
Music & Arts	『Korean Traditional Music』		Korean Traditional Music	
Teachers College	Korean Language and Literature Education	History Education	N/A	
Human Ecology	Child Studies	Clothing and Textiles	Child Studies (Child and Family Studies)	Child Studies (Child Studies)
	Food Science and Nutrition		Clothing and Textiles	Food Science and Nutrition
Public Administration	『Public Administration』		Public Administration	
College	Freshman		Transfer (2nd preference not available)	
Ecology & Environmental Science	『Ecology & Environmental System』	『Entomology』	Ecology & Environmental System(Plant Resources and Environment)	Ecology & Environmental System(Forest Environment and Resources)
	『Leisure & Sports』	『Tourism』	Ecological Environment & Ecotourism (Applied Biology)	Ecological Environment & Ecotourism(Ecotourism)
	『Animal Science』	『Animal Biotechnology』	Horse/Companion and wild Animal Science	Leisure & Sports
	『Horse/Companion and wild Animal Science』		Animal Science	Animal Biotechnology
Science & Technology	『Disaster Prevention and Environmental Engineering』	『Precision Mechanical Engineering』	Disaster Prevention and Environmental Engineering (Constructional and Disaster Prevention Engineering)	Disaster Prevention and Environmental Engineering (Civil Environmental Engineering)
	『Automotive Engineering』	『Software』	Precision Mechanical Engineering	Automotive Engineering (Environment Friendly Vehicle Engineering)
	『Food and Food-service Industry』	『Nano & Materials Science and Engineering』	Automotive Engineering (Intelligent Vehicle Engineering)	Software
	『Convergence & Fusion System Engineering』	『Textile Engineering & Fashion Design (Textile Engineering)』	Food and Food-service Industry	Nano & Materials Science and Engineering (Energy Chemical Engineering)
		『Textile Engineering & Fashion Design (Fashion Design)』	Nano & Materials Science and Engineering (Advanced Materials Science & Engineering)	Convergence & Fusion System Engineering (Aeronautical satellite system Engineering)
			Convergence & Fusion System Engineering(Plant system Engineering)	Textile Engineering & Fashion Design (Fashion Design)
			Textile Engineering & Fashion Design (Textile Engineering)	

- ※ **Note**
- ① **Most courses in the Undergraduate program are conducted in Korean, but some classes are taught in English. (Please check with the department office whether English classes are available.)**
 - ② Applicants who apply for the undergraduate freshman program can select two departments for a first preference and second preference, and students in the departments **marked in bold** can apply for a second preference only. (The second preference for those who apply for the undergraduate transfer program is not available.)
 - ③ School of Architecture (Major in Architecture) is a 5-year program.
 - ④ Students who are enrolled in the Department of Civil Engineering, Electrical Engineering, and Agricultural Civil & Bio-industrial Engineering must complete the ABEEK(Accreditation Board for Engineering Education of Korea) program. Transfer students may take one or two semesters longer depending on their ABEEK requirements.
 - ⑤ Applicants for the Department of French Language & Literature and Media and Communication must attend an in-person interview with a department representative in Korea.
 - ⑥ The Departments of Music, Design and Fine Arts accept new students in the spring semester only.
 - ⑦ According to the Regulations for Student Enrollment at the College of Education, the acceptance rate of international students cannot exceed 10% of the admission quota, and transfer applicants will not be eligible to apply (freshman only).
 - ⑧ Applicants who get a special admission in China and Kazakhstan can only apply to the department which get a special admission.
※ Applying for the 2nd preference and changing the department are not possible.

4. Eligibility

< Nationality Requirement for both freshmen and transfer students >

- Applicants and both of his/her parents must be non-Korean nationals.
 - * Nationality criterion is evidenced only if applicants and both of his/her parents acquire non-Korean nationals on the period before the applicant begins the curriculum corresponding to educational program of Korean high school.
- Multi-nationals with Korean citizenship are not eligible.
- Eligible Nationality Status must be established before the due date of application.

1. Freshmen Admissions

- Applicants must meet all of the following requirements
 - ① He or she must have completed his or her entire elementary and junior high school education and;
 - ② He or she must have completed (or is expected to complete) high school education at a comparable and equivalent level to that which is provided in Korea.
 - ※ NOTE : Applicants who have completed home schooling, cyber learning and qualification examination in Korea or abroad during 12 years of education are not eligible for enrollment.

Formal education equivalent to Korea high school

※ Enforcement decree in the Law of Elementary & Middle School Education No. 98-1-9

Years of Education			1	2	3	4	5	6	7	8	9	10	11	12	13	14	15	16
Korean system			Elementary school						Middle school			High school			University			
Foreign system	12	5 - 3 - 4 - 4	5years					3years			4years				4years			
	13	6 - 4 - 3 - 3	6years						4years			3years			3years			
	11	6 - 3 - 2 - 5	6years						3years			2years		5years				
	13	2 - 4 - 3 - 4 - 3	2years		4years				3years			4years				3years		
	12	8 - 4 - 4	8years								4years				4years			

- Applicants should complete all formal education in ONE country.
- Applicant who studied in more than two countries should complete 12 years of education.
 - Applicant who have completed less than 11 years should apply for high school as a freshman or transfer in Korea or overseas.
 - In the case of 11 years foreign system(above), applicants should complete the last 3 years of education in ONE country to acquire qualification for high school.
 - For students with unfinished years due to a gap in the education system, the period of years at an overseas university will be counted as equivalent to Korean high school years.

Criteria for Qualification of High School Graduation

- By the day before the opening day of admission to KNU
 - However, for applicants from countries which the academic year and the opening day of school are later than 1 month difference from Korea (ex, Japan). 1 month of the period of attendance at an overseas high school will be approved as equivalent to graduation.

2. Transfer Admissions (third grade)

Applicants must meet either of the following requirements :

- ① Graduated or about to graduate from a 4-year university, or;
- ② Graduated or about to graduate from a 2 or 3-year accredited college or completed at least two years (4 semesters) of a 4-year university program (completed over 65 credit hours)

※ NOTE

- Those who have completed two years at a 3-year university are not eligible.
- Those who graduated from a university that does not have a credit system are not eligible.
- Those who are enrolled at KNU can't apply for transfer admission.
- Applicants who have completed home schooling, cyber learning and qualification examination in Korea or abroad during whole education period are not eligible for enrollment.

3. Eligibility for Language Proficiency

A. Applicants who want to apply for the following **14 departments** must submit a Korean language score report **by July 1st(Fri), 2022.**

※ But, those who take the 81st [April 10th (Sun)] and 82nd[May 15th (Sun)] “TOPIK” exam can apply with a test identification slip and must submit a TOPIK certificate for level [3 or 4] or higher by July 1st, 13:00pm, 2022.

※ Applicants who are staying outside of Korea and are unable to take the 81st or 82nd TOPIK due to the spread of COVID-19 can take a KNU Korean language test(May 17th ~ 18th), and the results of KNU Korean language test can be accepted as the TOPIK certificate.

Department	Eligibility for Language Proficiency
Media and Communication, Economics and Trade Geography, Sociology, Fine Arts	Level 3 “TOPIK” certificate or higher
Korean Language and Literature, English Language and Literature French Language and Literature, German Language & Literature Philosophy, Social Welfare Korean Language & Literature Education	Level 4 “TOPIK” certificate or higher
Business Administration	Level 4 “TOPIK” certificate or higher, or a level 6 certificate of completion from Kyungpook National University's Korean Language Institute
Public Administration	Level 4 “TOPIK” certificate or higher, or a level 6 certificate from a Korean Language Institute in Korea

B. **Except for the above 14 departments**, applicants should provide one of the following as proof of language proficiency

- ① Korean proficiency : A “TOPIK” certificate for level 3 or higher
 - ※ Applicants who take the 81th [April 10th (Sun)] and 82nd[May 15th (Sun)] “TOPIK” exam can apply with a test identification slip and must submit a certificate for level 3 or higher by July 1st, 13:00pm, 2022.
 - ※ Applicants who are staying outside of Korea and are unable to take the 81st or 82nd TOPIK due to the spread of COVID-19 can take a KNU Korean language test(May 17th ~ 18th), and the results of KNU Korean language test can be accepted as the TOPIK certificate.
- ② Korean proficiency : Certificate of completion for level 3 or higher at a Korean Language Institute of a university.
 - ※ Only accepted if completion date is before May 12th, 2022.
- ③ Applicants who can speak Korean but don't have a certificate of Korean language proficiency can submit an English score report from a recognized English proficiency test. (TOEFL iBT 71, IELTS 5.5, NEW TEPS 326, CEFR B2 or higher)
 - ※ Only accepted if date of getting score is before May 12th, 2022.
 - ※ Applicants do not need to submit an English score report if they are from a country whose official language is English (USA, UK, Canada, Australia, New Zealand, Republic of South Africa, Ireland).

C. Applicants who get a special admission in Kazakhstan can submit the results of Korean language proficiency test conducted in Kazakhstan.

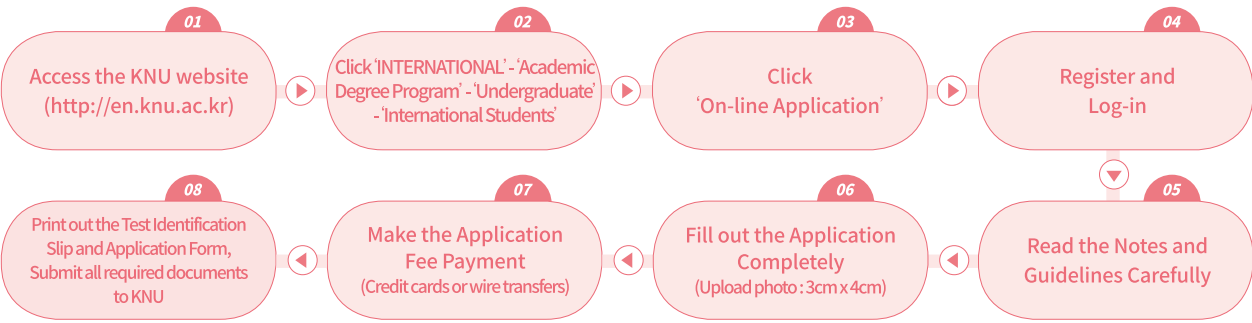
5. Application Procedure

1. Applications

A. On-line Application Deadline : April 18 (Mon) 09:00am, 2022 – May 6 (Fri) 18:00pm, 2022

- ① Online application site : To be announced at a later date on the KNU website. (<http://en.knu.ac.kr>)
- ② You will get an application number after completing the on-line application.

◆ Online application process



- ▶ The application will be processed once the application fee is paid.
- ▶ Modifications and cancellations are not allowed after completing the online application.
- ▶ If the applicant cancels their online application before May 6th, 18:00pm, the application fee will be refunded 100%. After the application deadline, the application fee will not be refunded.
- ▶ After completing the online application, you must print out a test identification slip, and remember the application number (4 digits).
- ▶ Applicants who fail to submit the required documents by the specified date (May 12th, 2022), even if their online application is completed, will be excluded from the screening process.
- ▶ Please complete your application in advance to avoid a system overload on the last day of the application period.
- ▶ Online application inquiries : [Uway apply] Tel : +82-1588-8988

B. Submission of Application Documents

- ① Deadline : April 18 (Mon), 2022 – May 12 (Thu), 2022, 18:00
- ② Where to submit : Office of International Affairs (첨성인미래관 2nd FL.)
- ③ How to submit : Applicants should submit completed and printed application forms downloaded from the online application site along with supplementary documents.

2. Qualification Screening

A. Screening period

May 13 (Fri), 2022 – May 24 (Tue), 2022

B. Screening Method

Examination of the suitability of applicants' academic background and language proficiency, so as to be deemed as “qualified” or “unqualified.”

3. KNU Korean language test

- A. Test period : May 17 (Tue), 2022 – May 18 (Wed), 2022
- B. For whom : Applicants who are living in the area where the TOPIK test(the 81st or 82nd) was canceled due to the spread of COVID-19.
- C. How to test : Online oral-test
 - The test time per student is around 15 minutes, and the level of Korean language proficiency will be determined (3 or 4 level) based on the test results.
- D. How to apply : The following 3 documents should be sent to the Office of International Affairs by May 12th, 2022.
 - ① Application form for KNU Korean language test(KNU format)
 - ② Documents indicating that you'd applied for the 81st or 82nd TOPIK test(e.g. test identification slip, screen capture of your application history, etc.)
 - ③ Notice of cancellation of TOPIK test(the 81st or 82nd) in the area you are living in
- E. How to check the result : Individual emails will be sent.
- F. Others : Applicants can attend the department interview only if you pass the KNU Korean language test.

4. Interviews

- A. Period
 - ① First preference : May 25 (Wed), 2022 – June 3 (Fri), 2022
 - ② Second preference: by June 15 (Wed), 2022
- B. How to interview

In-person interview or non face-to-face interview(e.g. ZOOM) with the department.

 - ① Applicants will be individually notified of date and location of interviews.
 - ② Applicants who are not selected for their first department preference will be interviewed for their second preference.
 - ※ Applicants who get a special admission in Kazakhstan will be exempted from the department interviews.

5. Notification of Admission Results

- A. When

July 5 (Tue), 2022 (expected)
- B. Method of Notification

Individual emails will be sent.

6. Required Documents

1. Application Documents

Required documents	Freshman	Transfer	Remark
① Completed application form	○	○	Print the online application and submit with other documents
② Statement of Purpose and Study Plan	○	○	KNU format on KNU website, in English or Korean
③ Graduation certificate (or proof of completion) from High School	○	○	- Chinese applicants : Notarized certificate and Certificate issued from "xuexinwang" - Others : Apostille or Certificate verified by the embassy
④ Official Transcript from High School	○	○	
⑤ Graduation certificate (or enrollment certificate) from College (or University)	×	○	
⑥ Official transcripts from College (or university) * Transcripts must include earned credits and grades in percentage	×	○	- Certificate must not exceed 2 years past issuance - Results of KNU Korean language test can be accepted as the TOPIK certificate.
⑦ English or Korean proficiency test results (TOPIK, IELTS, etc.) * Only accepted if expiry date is after April 18th, 2020	○	○	
⑧ Test identification slip of the 81st and 82nd TOPIK exam	△	△	
⑨ Certificate of enrollment (or completion) and transcript at a Korean Language Institute (if applicable)	△	△	Applicants who are taking a Korean language course in Korea must submit this certificate
⑩ Copy of applicant's passport	○	○	Page with photo and passport number
⑪ Copy of Alien Registration Card, front and back	△	△	Only for applicants who are in Korea
⑫ Certificate of parents, nationality and parent-child relationship between the applicants and his/her parents.	○	○	Refer to Note ③

- ※ **Note**
- ① All required documents must be submitted in person or by post. (Email applications will not be accepted.)
 - ② All required documents must be submitted in the order of the list above. (Do not use staplers, clips, etc.)
 - ③ Examples of relationships between the applicants and his or her parents.

Examples of Family Census Register
China: 户口本或是亲属关系公证; Philippines: Family Census; Indonesia: KARTU KELUARGA; Bangladesh: Birth Certificate (জন্ম কাগজ or জন্ম সার্টিফিকেট); Vietnam: So Ho Khau or Giay khai sinh; Mongolia: Family Registration Certificate; Pakistan: Family Certificate, Sri Lanka: Birth Certificate (ආචාරික); Myanmar: Family Certificate (இந்திய குடிசான்று); Nepal: Birth Certificate (जन्मदाला); Kyrgyzstan, Kazakhstan, Uzbekistan, Ukraine, Thailand: Birth Certificate

- If one of his or her parents remarried to a Korean, additional certificate(e.g., Family Relation Certificate, Resident Registration Certificate, etc.) is required to submit to prove if the applicant is adopted.
- ④ Prospective graduates must submit their expected certificate of graduation indicating the expected graduation date (year and month). The final certificate of graduation and verification certificate(Chinese : “xuexinwang” certificate / Others: Apostille or Certificate verified by the embassy) should be submitted by the mid-July, 2022.
Transcripts including the final semester must be submitted by Aug. 26th (Fri), 2022.
 - ⑤ Applicants who get a special admission in China and Kazakhstan should submit a Certificate of Conditional admission with other application documents.
 - ⑥ Passport : The expiration date must be after the semester start date.
 - ※ Applicants with Uzbek nationality must submit a new passport which is available for overseas travel.
 - ⑦ Documents in other languages must be accompanied by a notarized Korean or English translation. (**Certificate must be notarized within 6 months of submission.**)
 - ⑧ Applicants who attend the KNU Korean language test should submit the following 3 documents.
 - a. Application form for KNU Korean language test(KNU format)
 - b. Documents indicating that you'd applied for the 81st or 82nd TOPIK test(e.g. test identification slip, screen capture of your application history, etc.)
 - c. Notice of cancellation of TOPIK test(the 81th or 82th) in the area you are living in

2. Financial Documents

- A. For Whom : Applicants who pass the department interview
- B. Submission period : **From the date of announcement of interview result until June 24 (Fri), 2022**
- C. Required documents must meet one of the following criteria ①, ②, or ③ :
- ① If the applicant is the financial guarantor, self-financing the cost of study
→ Submit the original bank certificate of deposit balance (in English) showing the amount of at least US\$18,000 in the applicant's name.
 - ② If the financial guarantor is a parent
→ Submit the original bank certificate of deposit balance (in English) showing the amount of at least US\$18,000 in the parent's name.
→ Employment Certificate or Business Registration Certificate from a parent.
※ Brothers and sisters can be guarantors only in case of the parents, absence.
 - ③ Scholarship certificate from other organizations : If applicants are financially supported from their own countries' government or another organization
※ If the total amount of scholarship or support funds are less than US\$18,000, the applicant will have to submit the original bank certificate of deposit balance for the remaining amount as required per ① or ②.
※ **Note :**
 - 1. Certificates without an expiration date must be issued within one month of submission.
 - 2. Certificates with an expiration date must be valid until September 2022.
 - 3. Documents in other languages must be accompanied by a notarized Korean or English translation.

3. Verification Documents

- A. For Whom : Prospective graduates who didn't submit the verification documents at the time of application
- B. Submission period: by the middle of July, 2022 (The exact schedule will be announced later)
※ **Note :** 1. Certificate of Admission can be issued after submitting the verification documents below.
2. Failure to submit verification documents by Aug. 26th, 2022 may result in the cancellation of admission.
3. Applicants who graduated from school in S. Korea may submit an original certificate of graduation instead of verified copies.
- C. Required documents: select one of the documents below.
- ① Applicants who have completed courses in China :
→ Documents confirmed by the China Academic Degree & Graduate Education Development Center (<http://www.chsi.com.cn/xlrz>)
 - ② Applicants who have completed courses in other countries outside S. Korea and China submit one of following two documents :
 - **Apostille Certificate** of your previous academic documents (Please refer to [Appendix 1])
 - Documents verified by the Korean Embassy in other countries or the Embassy in Korea

7. Application Fee

1. Application fee

₩60,000 (Korean currency)

2. How to pay

- A. The application fee must be paid using the on-line application program.
※ **Note :** Please refer to the on-line instructions when you do the on-line application.
- B. If the application fee is not paid during the application period, the application will be canceled.
- C. You will get an application number after the application fee has been paid.
※ **Note :** It is not possible to revise the content of the application after the application fee has been paid.

3. Refund

- A. For Whom : Applicants who didn't pass the qualification screening
- B. Amount of Refund : ₩20,000 (Korean currency)
- C. How to refund : 20,000won will be refunded to the applicant's account.
※ **Note :** Applicants who fail the qualification screening must submit a copy of the bankbook (Korean bank) in the applicant's name by May 27th (Fri), 2022. Only for those who don't have a Korean bank account can submit a copy of the friend's bank account. But, Overseas remittance is not available.

8. Important Notes for Applicants

1. All documents should be in Korean or English. Documents in other languages must be accompanied by a notarized Korean or English translation.
2. If any required documents are found to be false or counterfeit, your application will be canceled.
3. Notice related the admissions will be sent to the applicant's email which is written on the application form, so applicants have to check the emails frequently from the date of application, and the Office of International Affairs is not responsible for application cancellation due to incorrect contact information (Email and Phone number, etc.) or not checking the emails.
4. If an applicant's visa is not issued, or is rejected, his or her application will be canceled.
5. Applicants receiving a scholarship of more than US\$18,000 from another institution are not required to submit a certificate of financial guarantee; however, they must submit a certificate/letter of confirmation from the institution that will pay their tuition during their period of study at KNU.
6. No submitted documents will be returned to the applicant. (Original copies of graduation certificates will be returned after the screening process is completed.)
7. If the applicant does not have sufficient academic ability, he/she may not be selected.
8. According to the regulations for Recognition of Graduation Qualification at KNU, international students who are enrolled at KNU from spring semester 2022 must have a “TOPIK” certificate for level 4 or higher before graduation.
※ Applicants who get a special admission in Kazakhstan must have a “TOPIK” certificate for level 4 or higher within 1 year of the admission.
9. International students who are admitted to the university or enrolled at KNU must have Korean health insurance. According to the National Health Insurance Act and its Enforcement Decree, International students who stay in Korea more than 6 months must have National Health Insurance(국민건강보험) in Korea.
10. (Applicants who stay in Korea) Applicants who get an admission from KNU must apply for the change of visa status(D-2-2) before the semester starts(Sep. 1st, 2022), and must check with the Immigration Office in person if you can maintain the visa status and it's possible to change the visa status to D-2-2 in Korea after being admitted to KNU. (Call center of Immigration office : ☎1345, without an area code)
11. Further details, if not stated in this guide, will be in accordance with the Office of International Affairs at KNU.
12. These admission guidelines were originally written in Korean and translated into English, Chinese and Vietnamese. Should there be any discrepancies, the Korean version supercedes translated versions.
13. Personal information of applicants will be collected and used for the admission process as shown below.
 - Articles collected and used : Name, Alien Registration No. Passport No. Address, Name of School graduated from, Telephone Number, Mobile Phone Number, Email, Language Grades, Period of Overseas Education, Period of Stay, Account Number, etc.
 - Purpose of collection and using : Admission Process, Visa, Academic Affairs, Scholarships, Statistics, Selection of Dormitory Residents, Admission Instructions.

Receiver of Information		Provided Information	Purpose of Provision	Holding Period
KNU	University Headquarter (Registrar Office, Office of Student Affairs, Finance department, etc.)	Name, Alien Registration No., Address, Telephone No., Information of application, Name of School graduated from, etc.	Creating the school register, Selection of Scholarship students, Statistics, Tuition fee payment, etc.	Until the purpose of process is achieved.
	College, School and Department office	Name, Telephone No., Name of School graduated from, Language grades, etc.	Conducting the interview, etc.	
	Dormitory Office	Name, Alien Registration No., Information of Application, etc.	Selection of Dormitory residents, Sending the instructions, etc.	
	Language Institute	Name, Telephone No., etc.	Providing information of language programs, etc.	
	IT Education Center	Name, Telephone No., etc.	Providing information of IT programs, etc.	
Third Party	Ministry of Justice, Immigration office	Name, Alien Registration No., Address, Telephone No., Information of application, Grades, Name of School graduated from, etc.	Issuing the Certificate of Admission, Service for immigration, etc.	
	Korea Council for University Education	Name, Alien Registration No., Information of application, etc.	Using the application system, etc.	

9. Scholarships and Benefits

1. TOPIK Scholarships for New Students
- A. A level 3 “TOPIK” certificate : Scholarships for 16-20% of the tuition fee for the first semester.
- B. A level 4 “TOPIK” certificate : Scholarships for 40-42% of the tuition fee for the first semester.
- C. A level 5 “TOPIK” certificate : Scholarships for 80-84% of the tuition fee for the first semester.
- D. A level 6 “TOPIK” certificate : Scholarships for 100% of the tuition fee for the first semester.
2. Scholarships for students who complete 2 semesters of Korean language program at KNU (As of May 12th, 2022)
- Scholarships for 16-20% of the tuition fee for the first semester.
- ※ But, it's not possible to receive benefits at the same time with the “1. TOPIK scholarships for new students” above.
3. TOPIK Scholarships for enrolled students
- Those who do not have a “TOPIK” certificate or have a level 3 “TOPIK” certificate when they enter KNU can receive scholarships after getting a “TOPIK” certificate for level 4 or higher.
4. Scholarships for Academic Excellence
- A. The top 7% in GPA of all international students for each college can receive a 80-84% scholarship for the following semester.
- B. The top 37% in GPA of all international students for each college can receive a 16-20% scholarship for the following semester.
5. Students who live in the dormitory will be exempt from dormitory room fees for the first semester.
- ※ Due to limited budget, students who can enter the dormitory will be selected.

10. Tuition Fees (per semester as of 2022)

(1 Dollar: 1,150 Won)

Campus	College	Freshman	
		Korean Won	US Dollars
Daegu	Humanities / Teachers College	₩1,981,000	\$1723
	Humanities (Archaeology & Anthropology)	₩2,028,500	\$1764
	Natural Sciences / Human Ecology	₩2,379,000	\$2069
	Economics & Business Administration / Public Administration	₩1,954,000	\$1699

Campus	College	Freshman	
		Korean Won	US Dollars
Daegu	Engineering / IT Engineering	₩2,531,000	\$2201
	Agriculture & Life Sciences	₩2,379,000	\$2069
	Agriculture & Life Sciences (Agricultural Economics)	₩1,981,000	\$1723
	Social Sciences	₩2,019,000	\$1756
	Music & Arts	₩2,610,000	\$2270
	Music & Arts (Fine Arts)	₩2,670,000	\$2322
Sangju	Ecology & Environmental Science	₩2,379,000	\$2069
	Ecology & Environmental Science [Ecological Environment Ecotourism (Ecotourism)]	₩1,981,000	\$1723
	Science & Technology	₩2,531,000	\$2201
	Science & Technology (Food and Food-service Industry)	₩2,379,000	\$2069

※ Amounts are subject to change.

11. Dormitory Fees (as of 2022)

Room & Board		Fees				Note
		Spring Semester	Fall Semester	Summer Vacation	Winter Vacation	
Room	2 people per room	₩536,700	₩536,700	₩243,000	₩346,100	Students can select one, two or three meals per day.
Board (3 meals per day)		₩855,910	₩825,790	₩494,470	₩419,170	

※ Amounts are subject to change.

※ Homepage of Dormitory: <http://dorm.knu.ac.kr> (Daegu Campus), <http://dorm.knu.ac.kr/scdorm> (Sangju Campus)

12. Contact Us

1. Office of International Affairs
- Hyunju SEO (Ms.)
2. Address
- Cheomseongin Student Futures Support Bldg. 2nd floor (첨성인미래관 2층)
- Kyungpook National University, Office of International Affairs,
- 80, Daehak-ro, Buk-gu, Daegu, 41566
3. 연락처
- Tel) +82-53-950-2434, Fax) +82-53-950-2419, Email) globalhj@knu.ac.kr
4. Office Hours
- (Mon-Fri) 9:00am - 12:00pm / 1pm - 6pm
5. Website
- <http://www.knu.ac.kr> (Korean), <http://en.knu.ac.kr> (English), <http://cn.knu.ac.kr> (Chinese)

III. APPENDICES

1. Apostille

Since July 14, 2007, the Republic of Korea has been part of the 1961 Hague Convention abolishing the Requirement of Legalization for Foreign Public Documents. The Convention provides for the use of simplified certification or public documents (including notarized documents) among countries that have joined the convention. The Apostille ensures that public documents issued in one signatory country will be recognized as valid in another signatory country.

- NOTE : Newly admitted students from countries that are signatories to the convention must meet the following requirements
- ① Official certificates (transcripts, diplomas, etc.) from public schools or institutions should be submitted with the attachment of “Apostille.”
 - ② Official certificates (transcripts, diplomas, etc.) from private schools or institutions, however, should be officially notarized by a notary, agency, or any other authority competent under the law of the country of origin of the certificates, and then, should be submitted with the attachment of “Apostille.”

< Signatory Countries for Apostille certificates >

Albania, Andorra, Antigua and Barbuda, Argentina, Armenia, Australia, Austria, Azerbaijan, Bahamas, Barbados, Bahrain, Belarus, Belgium, Belize, Bolivia, Bosnia-Herzegovina, Botswana, Brazil, Brunei Darussalam, Bulgaria, Burundi, Cape Verde, Chile, China, Colombia, Cook Islands, Costa Rica, Croatia, Cyprus, Czech Republic, Denmark, Dominica, Dominican Republic, Ecuador, El Salvador, Estonia, Eswatini, Fiji, Finland, France, Georgia, Germany, Greece, Grenada, Guotemolo, Guyana, Honduras, Hungary, Iceland, India, Ireland, Israel, Italy, Jamaica, Japan, Kazakhstan, Korea, Kosovo, Kyrgyzstan, Latvia, Lesotho, Liberia, Liechtenstein, Lithuania, Luxembourg, Malawi, Malta, Marshall Islands, Mauritius, Mexico, Monaco, Mongolia, Montenegro, Morocco, Namibia, Netherlands, New Zealand, Nicaragua, Niue, Norway, Oman, Palau, Panama, Paraguay, Peru, Philippines, Poland, Portugal, Republic of Moldova, Republic of North Macedonia, Romania, Russian Federation, Saint Kitts and Nevis, Saint Lucio, Saint Vincent and the Grenadines, Samoa, San Marino, Sao Tome and Principe, Serbia, Seychelles, Singapore, Slovakia, Slovenia, South Africa, Spain, Suriname, Sweden, Switzerland, Tajikistan, Tonga, Trinidad and Tobago, Tunisia, Turkey, Ukraine, United Kingdom, United States of America, Uruguay, Uzbekistan, Vanuatu, Venezuela

※ For information regarding how to get an Apostille, please refer to the website : <http://www.hcch.net> → Apostille Section

2. Homepages of KNU Academic Departments

College	Department (Major)	Homepage
Humanities	Korean Language & Literature	http://korean.knu.ac.kr (Korean, English)
	English Language & Literature	http://english.knu.ac.kr (Korean, English)
	History	https://khistory-eng.knu.ac.kr (English)
	Philosophy	http://philosophy.knu.ac.kr (Korean, English)
	French Language & Literature	http://france.knu.ac.kr (Korean)
	German Language & Literature	http://german.knu.ac.kr (Korean, English)
	Chinese Language & Literature	http://chinese.knu.ac.kr (Korean, English, Chinese)
	Archaeology & Anthropology	http://aran.knu.ac.kr (Korean)
	Japanese Language & Literature	http://japan.knu.ac.kr (Korean)
	Korean Literature in Classical Chinese	http://hanmun.knu.ac.kr (Korean, English)
	Russian Language & Literature	http://knurussian.kr (Korean, English)
Social Sciences	Political Science & Diplomacy	http://politics.knu.ac.kr (Korean)
	Sociology	http://socio.knu.ac.kr (Korean, English)
	Geography	http://geog.knu.ac.kr (Korean, English)
	Psychology	http://psy.knu.ac.kr (Korean)
	Library & Information Science	https://enlis.knu.ac.kr (English)
	Social Welfare	http://knusw.knu.ac.kr (Korean, English)
Natural Sciences	Media and Communication	https://mediacomm.knu.ac.kr (Korean, English)
	Mathematics	http://math.knu.ac.kr (Korean, English)
	Physics	http://old.physicsknu.org/eng (English)
	Chemistry	http://chem.knu.ac.kr (Korean, English)
	Life Sciences (Biology)	http://bio.knu.ac.kr (Korean, English)
	Life Sciences (Biotechnology)	http://biotech.knu.ac.kr (Korean, English)
	Earth System Science (Geology)	http://geology.knu.ac.kr (Korean, English)
	Earth System Science (Astronomy & Atmospheric Science)	http://hanl.knu.ac.kr (Korean)
	Earth System Science (Oceanography)	http://ocean.knu.ac.kr (Korean, English)
	Statistics	http://stat.knu.ac.kr (Korean, English)
Economics & Business Administration	Economics & Trade	http://econ.knu.ac.kr (Korean, English)
	Business Administration	http://biz.knu.ac.kr (Korean, English)
Engineering	Materials Science & Engineering (Materials Science and Metallurgical Engineering)	http://metal.knu.ac.kr (Korean, English)
	Materials Science & Engineering (Electronic Materials Engineering)	http://emse.knu.ac.kr/main (Korean)
	Mechanical Engineering	http://me.knu.ac.kr (Korean)
	Applied Chemistry	http://appchem.knu.ac.kr (Korean)
	Chemical Engineering	http://chemeng.knu.ac.kr (Korean, English)
	Architecture	http://arch.knu.ac.kr (Korean)
	Civil Engineering	http://civil.knu.ac.kr/main (Korean)
	Polymer Engineering	http://polymer.knu.ac.kr (Korean, English)
	Textile System Engineering	http://textile-eng.knu.ac.kr (Korean)
	Environmental Engineering	https://env.knu.ac.kr (Korean, English)
	Energy Engineering	http://energy.knu.ac.kr (Korean, English)

College	Department (Major)	Homepage
IT	Electronics Engineering	http://see.knu.ac.kr/eng (English)
	Computer Science	http://computer.knu.ac.kr (Korean, English)
	Electrical Engineering	http://electric.knu.ac.kr (Korean, English)
Agriculture & Life Sciences	Applied Biosciences (Environment and Life Chem.)	http://kac.knu.ac.kr (Korean)
	Applied Biosciences (Plant Biosciences)	http://pbs.knu.ac.kr (Korean)
	Applied Biosciences (Applied Biology)	http://agbl.knu.ac.kr (Korean)
	Food Science & Technology	https://foodbio.knu.ac.kr (Korean)
	Forest Sciences and Landscape Architecture (Forestry)	http://forestry.knu.ac.kr (Korean, English)
	Forest Sciences and Landscape Architecture (Wood & Paper Science)	http://wood.knu.ac.kr (Korean)
	Forest Sciences and Landscape Architecture (Landscape Architecture)	http://land.knu.ac.kr (Korean)
	Horticultural Science	https://horti.knu.ac.kr (Korean, English)
	Agricultural Civil & Bio-Industrial Engineering (Agricultural Civil Engineering)	http://acen.knu.ac.kr (Korean)
	Agricultural Civil & Bio-Industrial Engineering (Bio-Industrial Machinery Engineering)	http://bime.knu.ac.kr (Korean)
	Bio-fibers and Materials Science	http://biofiber.knu.ac.kr (Korean)
	Food and Resource Economics	http://agec.knu.ac.kr (Korean)
	Music	http://music.knu.ac.kr (Korean)
	Korean Traditional Music	http://kmusic.knu.ac.kr (Korean)
	Fine Arts	http://arts.knu.ac.kr (Korean)
Music & Arts	Design	http://vcd.knu.ac.kr (Korean, English)
	Korean Language and Literature Education	http://koredu.knu.ac.kr (Korean)
	History Education	http://hisedu.knu.ac.kr (Korean)
Human Ecology	Child Studies	http://child.knu.ac.kr (Korean)
	Clothing and Textiles	http://fashion.knu.ac.kr (Korean)
	Food Science and Nutrition	http://fsnu.knu.ac.kr (Korean)
Public Administration	Public Administration	http://puad.knu.ac.kr (Korean, English)
Ecology & Environmental Science (Sangju Campus)	Ecology & Environmental System (Plant Resources and Environment)	http://scplant.knu.ac.kr (Korean, English)
	Ecology & Environmental System (Forest Environment and Resources)	http://forest.knu.ac.kr (Korean, English)
	Entomology	http://abio.knu.ac.kr (Korean)
	Tourism	http://tour.knu.ac.kr (Korean, English)
	Leisure & Sports	http://dols.knu.ac.kr (Korean, English)
	Animal Science	http://ani.knu.ac.kr (Korean, English)
	Animal Biotechnology	http://anibiotech.knu.ac.kr (Korean, English)
	Horse/Companion and Wild Animal Science	http://axt.knu.ac.kr (Korean, English)
Science & Technology (Sangju Campus)	Advanced Civil Environmental Engineering (Constructional Disaster Prevention Engineering)	https://endisaster.knu.ac.kr (English)
	Advanced Civil Environmental Engineering (Civil Environmental Engineering)	http://ue.knu.ac.kr (Korean, English)
	Precision Mechanical Engineering	http://pme.knu.ac.kr (Korean, English)
	Automotive Engineering	http://auto.knu.ac.kr (Korean, English)
	Software	http://se.knu.ac.kr (Korean, English)
	Food and Food service Industry	http://ffsi.knu.ac.kr (Korean, English)
	Nano & Materials Science and Engineering	http://nanosj.knu.ac.kr (Korean, English)
	Convergence & Fusion System Engineering	http://cfse.knu.ac.kr (Korean, English)
	Textile Engineering & Fashion Design (Textile Engineering)	http://textile.knu.ac.kr (Korean, English)
	Textile Engineering & Fashion Design (Fashion Design)	http://style.knu.ac.kr (Korean, English)

3. Location of Department Offices and Telephone Numbers

College	Department (Major)		Location	Bldg. No.	Tel. (area code: 053)
Humanities	Korean Language & Literature		College of Humanities, 406	104	950-5106
	English Language & Literature		Graduate School Bldg. 514	107	950-5120
	History		Graduate School Bldg. 419		950-5135
	Philosophy		College of Humanities, 410	104	950-5148
	French Language & Literature		Graduate School Bldg. 417	107	950-5159
	German Language & Literature		Graduate School Bldg. 418		950-5169
	Chinese Language & Literature		Graduate School Bldg. 402		950-5178
	Archaeology & Anthropology		Graduate School Bldg. 518		950-5186
	Japanese Language & Literature		Graduate School Bldg. 415		950-6150
	Korean Literature in Classical Chinese		Graduate School Bldg. 404		950-6160
	Russian Language & Literature		Graduate School Bldg. 210		950-6170
Social Sciences	Political Science & Diplomacy		College of Social Sciences. 506	310	950-5206
	Sociology		College of Social Sciences. 414		950-5218
	Geography		College of Social Sciences. 412		950-5227
	Psychology		College of Social Sciences. 209		950-5244
	Library & Information Science		College of Social Sciences. 408		950-5236
	Social Welfare		College of Social Sciences. 210		950-5251
	Media and Communication		College of Social Sciences. 406		950-5259
	Natural Sciences	Mathematics			College of Natural Sciences. 304
Physics		Natural Science Bldg.1, 101	208	950-5316	
Chemistry		Chemistry Bldg. 207	407	950-5329	
Life Sciences		Biology	Biology Bldg. 215	217	950-5342
		Biotechnology	Biotechnology Bldg. 205	207	950-6349
Earth System Science		Natural Science Bldg.2, 113 / 314 Biotechnology Bldg. 101-3	210 207	950-5396, 5354, 6360	
Statistics		College of Natural Sciences. 411-2	209	950-5364	
Economics & Business Administration		Economics & Trade		College of Economics & Business Administration 2, 105	309
	Business Administration		College of Economics & Business Administration 2, 317	950-5439, 5417	
Engineering	Materials Science & Engineering	Materials Science and Metallurgical Engineering	College of Engineering Bldg.3, 509	409	950-5559
		Electronic Materials Engineering	College of Engineering Bldg.8, 215	419	950-5631
	Mechanical Engineering		College of Engineering Bldg.3, 311	409	950-5568, 5569
	Applied Chemistry		College of Engineering Bldg.1, 213	404	950-5581
	Chemical Engineering		College of Engineering Bldg.9, 109	406	950-5615
	Architecture		College of Engineering Bldg.2, 316	401	950-5590
	Polymer Engineering		College of Engineering Bldg.9, 119	406	950-5623
	Civil Engineering		College of Engineering Bldg.2, 216	401	950-5607
	Textile System Engineering		College of Engineering Bldg.1, 315	404	950-5638
	Environmental Engineering		College of Engineering Bldg.6, 313	410	950-6580
	Energy Engineering		College of Engineering Bldg.7, 209	411	950-8970
IT	Electronics Engineering		College of IT Bldg.1, 409	418	950-5506
	Computer Science		College of Engineering Bldg.9, 413	406	950-5550, 6370
	Electrical Engineering		College of Engineering Bldg.8, 308	419	950-5600
Agriculture & Life Sciences Life Sciences	Applied Biosciences	Environment and Life Chemistry	College of Agriculture & Life Science Bldg.1, 405	201	950-5714
		Plant Biosciences	College of Agriculture & Life Science Bldg.4, 207	125	950-5706
		Applied Biology	College of Agriculture & Life Science Bldg.2, 209	203	950-5758

College	Department (Major)		Location	Bldg. No.	Tel. (area code: 053)
Agriculture & Life Sciences Life Sciences	Food Science & Biotechnology	Food Biotechnology	College of Agriculture & Life Science Bldg.3, 202	202	950-5772
		Food Biomaterials	College of Agriculture & Life Science Bldg.3, 328		950-5750
		Food Application Technology	College of Agriculture & Life Science Bldg.2, 410-1	203	950-7761
	Forest Sciences and Landscape Architecture	Forestry	College of Agriculture & Life Science Bldg.1, 416	201	950-5744
		Wood & Paper Science	College of Agriculture & Life Science Bldg.3, 403	202	950-5795
		Landscape Architecture	College of Agriculture & Life Science Bldg.1, 506	201	950-5779
	Horticultural Science		College of Agriculture & Life Science Bldg.4, 409	125	950-5721
	Agricultural Civil & Bio-Industrial Engineering	Agricultural Civil Engineering	College of Agriculture & Life Science Bldg.2, 106	203	950-5730
		Bio-Industrial Machinery Engineering	College of Agriculture & Life Science Bldg.4, 603	125	950-5790
	Bio-fibers and Materials Science		College of Agriculture & Life Science Bldg.2, 309	203	950-5737
	Food and Resource Economics		College of Agriculture & Life Science Bldg.4, 807	125	950-5765
Music & Arts	Music		College of Music & Visual Arts, 302	120	950-5656
	Korean Traditional Music		College of Music & Visual Arts, 405		950-5670
	Fine Arts		Fine Art & Design Bldg. 105	119	950-5680
	Design		Fine Art & Design Bldg. 104-1		950-5694
Teachers College	Korean Language and Literature Education		Teacher's College 623	301	950-5821
	History Education		Teacher's College 722		950-5848
Human Ecology	Child Studies		College of Human Ecology 214	307	950-6210
	Clothing and Textiles		College of Human Ecology 313		950-6220
	Food Science and Nutrition		College of Human Ecology 115		950-6230
Public Administration	Public Administration		College of Law 113	311	950-5474
College	Department (Major)		Location	Bldg. No.	Tel. (area code: 054)
Ecology & Environmental Science (Sangju Campus)	Ecology & Environmental System	Plant Resources and Environment	Bldg. 6, 112	06	530-1200
		Forest Environment and Resources	Bldg. 6, 417		530-1240
	Entomology		Bldg. 6, 216	06	530-1210
	Tourism		Main Administration Bldg. 207	04	530-1380
	Leisure & Sports		Bldg. 1, 209	01	530-1430
	Animal Science		Bldg. 6, 323	06	530-1220
	Animal Biotechnology		Bldg. 6, 426		530-1940

College	Department (Major)		Location	Bldg. No.	Tel. (area code: 054)
Ecology & Environmental Science (Sangju Campus)	Horse/Companion and Wild Animal Science		Bldg. 6, 327	06	530-1950
Science & Technology (Sangju Campus)	Advanced Civil Environmental Engineering	Constructional Disaster Prevention Engineering	Bldg. 7, 210	07	530-1250
		Civil Environmental Engineering	Bldg. 5, 112	05	530-1440
	Precision Mechanical Engineering		Bldg. 7, 304	07	530-1270
	Automotive Engineering	Environment Friendly Vehicle Engineering	Bldg. 2, 305	02	530-1400
		Intelligent Vehicle Engineering	Bldg. 2, 304		530-1136
	Software		Bldg. 5, 211	05	530-1450
	Food and Food service Industry		Bldg. 9, 213	09	530-1300
	Nano & Materials Science and Engineering	Advanced Materials Science & Engineering	Bldg. 2, 104	02	530-1410
		Energy Chemical Engineering	Bldg. 7, 418	07	530-1330
	Convergence & Fusion System Engineering	Aeronautical satellite system Engineering	Bldg. 8, 311	08	530-1490
		Plant system Engineering	Bldg. 9, 413	09	530-1480
	Textile Engineering & Fashion Design	Textile Engineering	Bldg. 8, 213	08	530-1280
		Fashion Design	Bldg. 9, 311	09	530-1310

